



# Office of General Services

DESIGN & CONSTRUCTION GROUP  
THE GOVERNOR NELSON A. ROCKEFELLER  
EMPIRE STATE PLAZA  
ALBANY, NY 12242

---

## ADDENDUM NO. 1 TO PROJECT NO. 47441

### CONSTRUCTION, HVAC, PLUMBING AND ELECTRICAL WORK RECONFIGURE BATHROOMS, BUILDINGS 1, 4, 6 & 7 ELMIRA PSYCHIATRIC CENTER 100 WASHINGTON ST ELMIRA, NY

January 16, 2026

**NOTE:** This Addendum forms a part of the Contract Documents. Insert it in the Project Manual. Acknowledge receipt of this Addendum in the space provided on the Bid Form.

#### PLUMBING WORK DRAWINGS:

1. Revised Drawings:
  - a. Drawing No. FP-104, noted Revised Drawings dated 1/15/2026, accompanies this Addendum and supersedes the same numbered previously issued drawing.

#### ELECTRICAL WORK DRAWINGS:

2. Revised Drawings:
  - a. Drawing Nos. E-001, E-101, E-102, E-103, E-104 and E-105, noted Revised Drawings dated 1/15/2026, accompanies this Addendum and supersedes the same numbered previously issued drawing.

#### END OF ADDENDUM

Brady M. Sherlock, P.E.  
Director, Division of Design  
Design & Construction

**KEY NOTES**

- 1 SPRINKLER HEADS TO BE INSTALLED IN NEW CEILING. COORDINATE WITH C-CONTRACT.
- 2 SPRINKLER PIPE FOR THIS AREA TO BE FABRICATED USING STEEL PIPE.
- 3 ACCESS DOOR TYP. REFER TO C-CONTRACT FOR LOCATIONS.
- 4 PROVIDE PIPING ENCLOSURE FOR ALL EXPOSED PIPING IN THIS AREA.
- 5 EXTEND EXISTING PIPING ENCLOSURE TO BE FLUSH WITH NEW ALL.

**LEGEND**

- ☒ UPRIGHT SPRINKLER HEAD
- EXISTING LIGATURE RESISTANT SPRINKLER HEAD
- LIGATURE RESISTANT SPRINKLER HEAD

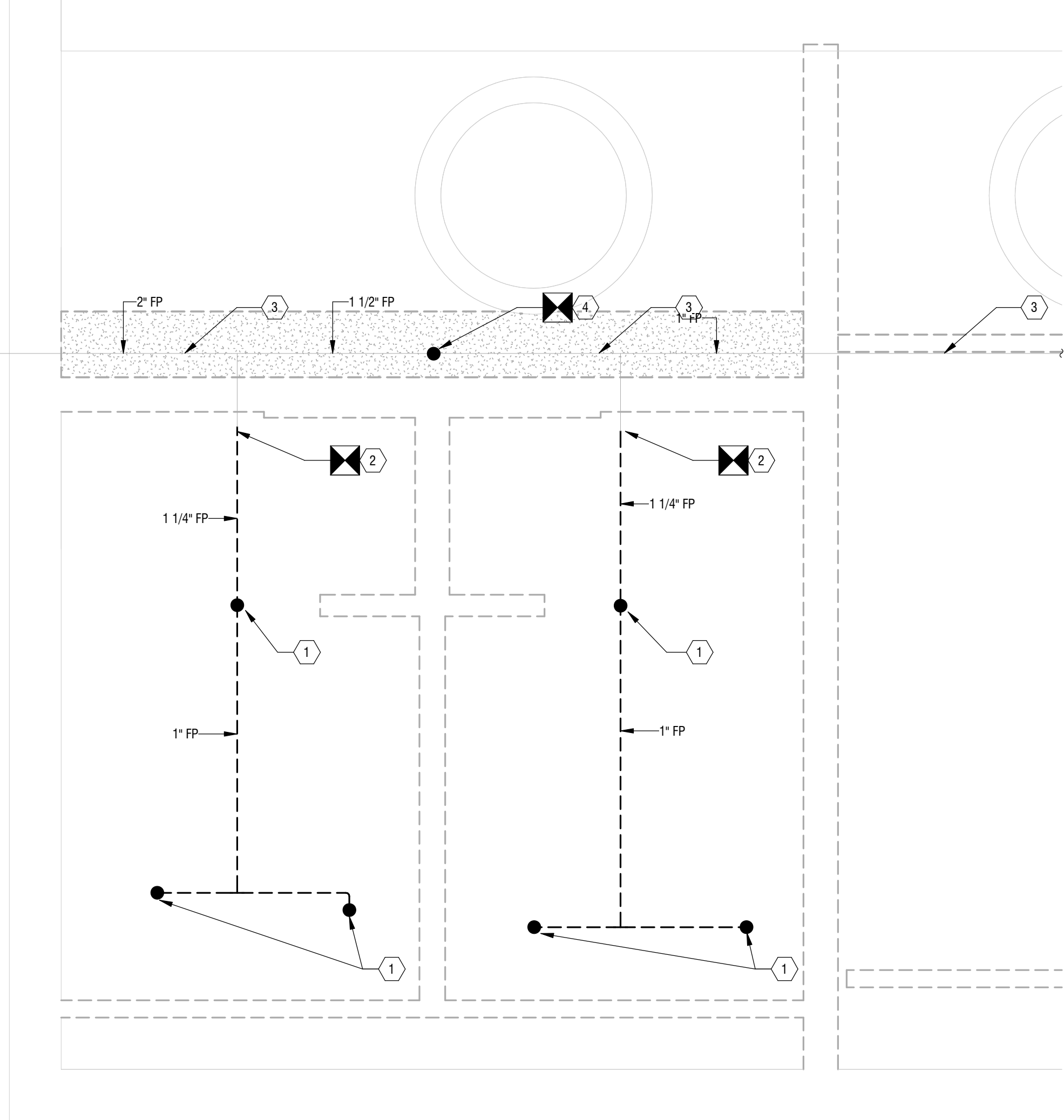
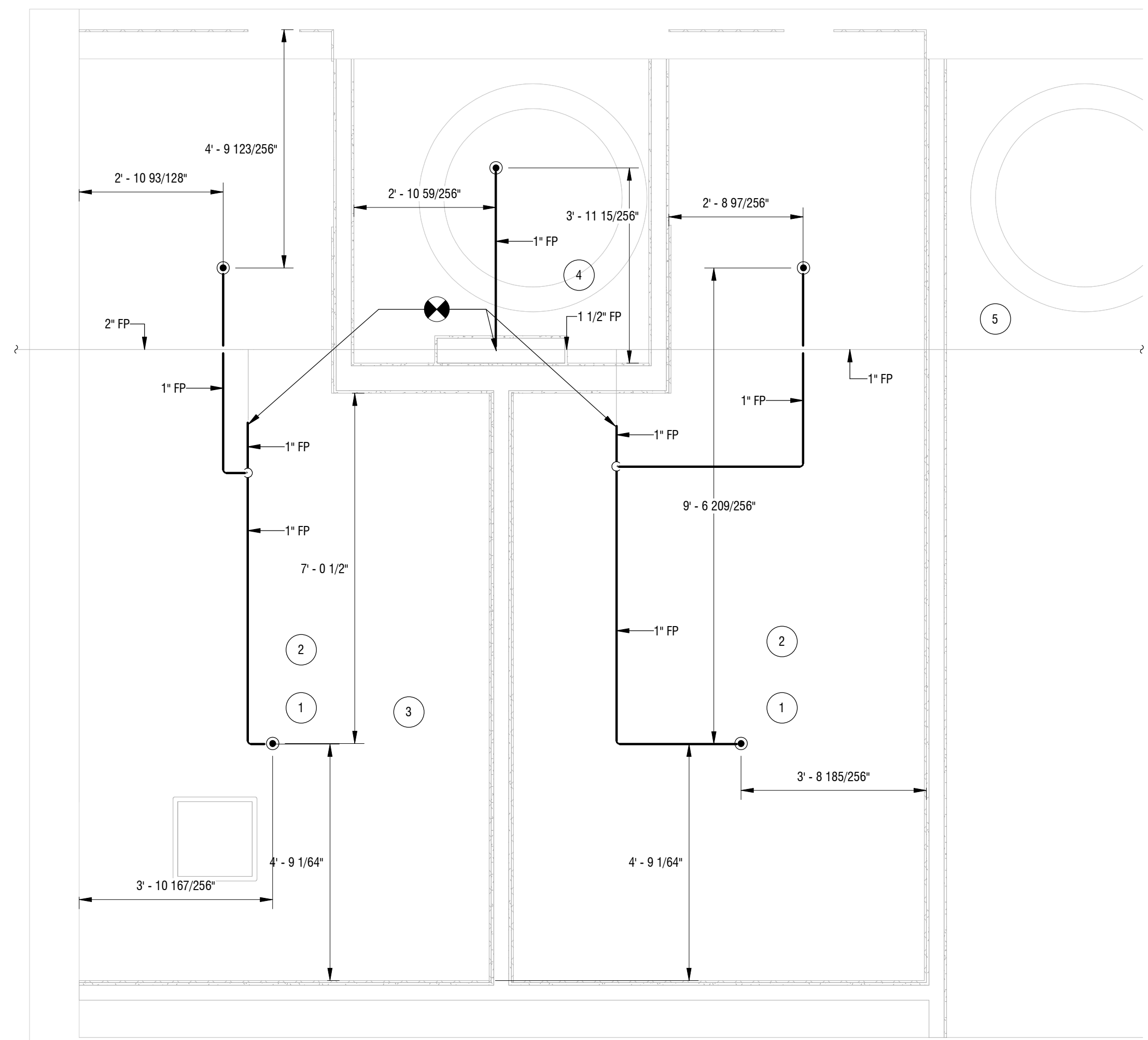
**REMOVAL KEY NOTES**

- R1 REMOVE EXISTING SPRINKLER HEAD AND PIPING DROP.
- R2 REMOVE SPRINKLER PIPING TO POINT SHOWN. PREPARE FOR NEW CONNECTION.
- R3 REMOVE EXISTING PIPING ENCLOSURE TO NEW WALL LOCATION AND TO STAIRWELL WALL.
- R4 REMOVE EXISTING SPRINKLER HEAD AND PIPING DROP BACK TO MAIN. PREPARE FOR NEW CONNECTION.

**GENERAL NOTES**

- 1. REFER TO DWG G-001 FOR PROJECT LOCATIONS.
- 2. SCHEDULE SHUTDOWN WORK WITH DIRECTOR'S REPRESENTATIVE. PROVIDE FIRE WATCH FOR ALL SHUTDOWNS GREATER THAN 10 HOURS WITHIN A 24 HOUR PERIOD PER NFPA 25.
- 3. PROVIDE SUPPORTS IN ACCORDANCE WITH NFPA-13.
- 4. SPRINKLER PIPING TAKEN FROM DIRECTOR'S REPRESENTATIVE AS-BUILT DWGS. VERIFY PIPE LOCATIONS AND SIZES IN FIELD.
- 5. EXISTING HAZARD CLASSIFICATION IS LIGHT HAZARD. NEW HAZARD OCCUPANCY WILL BE LIGHT HAZARD. SCOPE OF WORK SHALL BE TO RELOCATE/ADD HEADS AS NECESSARY TO MEET LAYOUT REQUIREMENTS.
- 6. LIGHT HAZARD SPRINKLER LOCATION:  
A. MAX SPRINKLER AREA OF OPERATION - 225 SQ FT.  
B. MAX SPACING BETWEEN SPRINKLERS - 15 FT.  
C. MAX SPACING TO WALLS - 7.5 FT.  
D. MIN SPACING FROM WALLS - 4 IN.  
E. MIN SPACING BETWEEN SPRINKLERS - 6 FT.

**WARNING:**  
THE ALTERATION OF THIS MATERIAL IN ANY WAY, UNLESS DONE UNDER THE DIRECTION OF A COMPARABLE PROFESSIONAL, I.E. ARCHITECT FOR AN ARCHITECT, ENGINEER FOR AN ENGINEER OR LANDSCAPE ARCHITECT FOR A LANDSCAPE ARCHITECT, IS A VIOLATION OF THE NEW YORK STATE EDUCATION LAW AND/OR REGULATIONS AND IS A CLASS 'A' MISDEMEANOR.

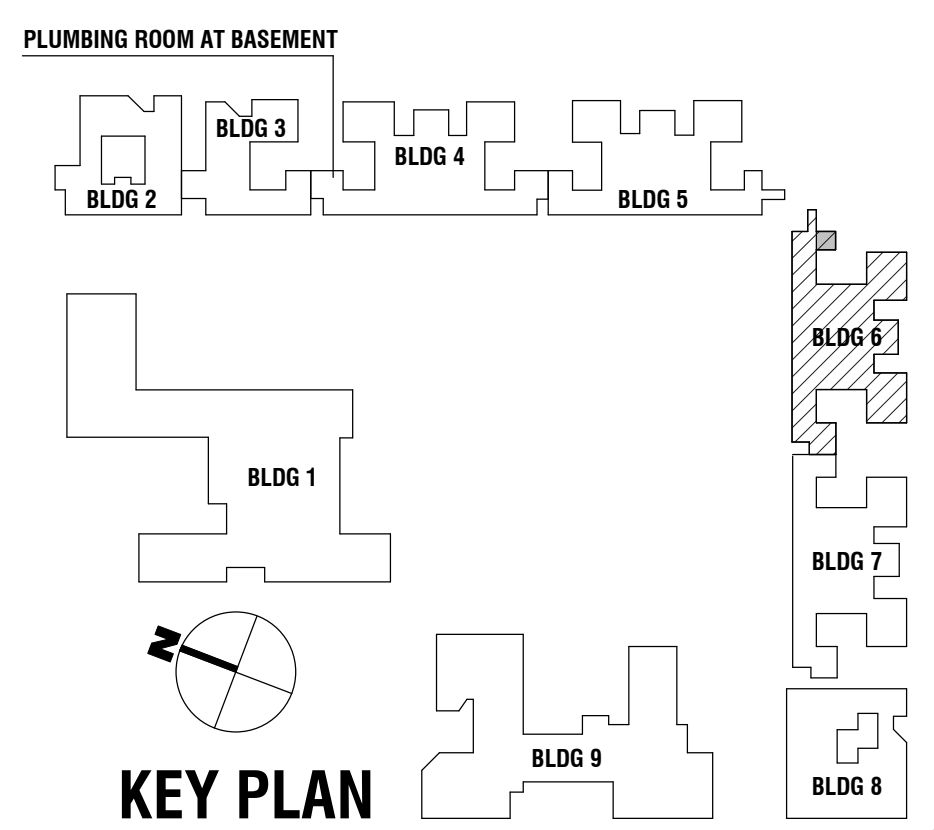


1 ROOMS 6211 & 6212

FP-104 1/2" = 1'-0"

2 ROOMS 6211 & 6212 REMOVAL

FP-104 1/2" = 1'-0"



CONTRACT: **PLUMBING**

TITLE: RECONFIGURE BATHROOMS, BUILDINGS 1, 4, 6 & 7

LOCATION: ELMIRA PSYCHIATRIC CENTER  
100 WASHINGTON ST.  
ELMIRA, NEW YORK

CLIENT: NYS OFFICE OF MENTAL HEALTH

MARK	DATE	DESCRIPTION
△	01/15/2026	REVISED DRAWING
	12/19/2025	BID DOCUMENTS

PROJECT NUMBER: **47441-P**

DESIGNED BY: SAD

DRAWN BY: BJS

FIELD CHECK: BT

APPROVED: SAD

SHEET TITLE: **BUILDING 6 ROOMS 6211 & 6212 FIRE PROTECTION**

DRAWING NUMBER: **FP-104**

SHEET 38 of 56



LIGHT FIXTURE SCHEDULE										
TYPE	DESCRIPTION	LAMP	COLOR TEMPERATURE	LUMENS	WATTAGE	VOLTAGE	MOUNTING	MANUFACTURER	MODEL	NOTES
A	MEDMASTER DOWNLIGHT	LED	3500 K	920 lm	9 W	120 V	RECESSED	KENALL	BHDL6-FF-2FW-9L-35K8-W-FW-G-RIG6-DV-DIM1	

LIGHTING DEVICE SCHEDULE			
TYPE	DESCRIPTION	MANUFACTURER	MODEL
OS	OCCUPANCY SENSOR	LUTRON	LOS-CDT-500-WH

**KEYED NOTES:**

- 1 REMOVE EXISTING FIRE ALARM NOTIFICATION DEVICE. REMOVE ASSOCIATED BOX AND WIRING BACK TO CLEAR AREA. WIRING TO BE REUSED FOR NEW WORK.
- 2 REMOVE EXISTING LIGHTING FIXTURE. REMOVE ASSOCIATED BOX AND WIRING BACK TO CLEAR AREA. BRANCH CIRCUIT TO BE REUSED FOR NEW WORK.
- 3 REMOVE EXISTING RECEPTACLE. REMOVE ASSOCIATED BOX AND WIRING BACK TO CLEAR AREA. BRANCH CIRCUIT TO BE REUSED FOR NEW WORK.
- 4 PROVIDE NEW FIRE ALARM NOTIFICATION DEVICE. EXTEND EXISTING WIRING AND CONNECT TO NEW DEVICE.
- 5 REMOVE EXISTING FIRE ALARM NOTIFICATION DEVICE AND REMOVE WIRING BACK TO SOURCE.
- 6 REMOVE JUNCTION BOX AND PULL BACK WIRING TO CLEAR AREA. REWORK WIRING TO MAINTAIN ACTIVE CIRCUITS.
- 7 PROVIDE POWER FROM ADJACENT RECEPTACLE CIRCUIT TO POWERED FLUSH VALVE. PROVIDE (2) 4"x4" JUNCTION BOXES FOR THE TRANSFORMER AND THE SENSOR/BUTTON. REFER TO FLUSH VALVE MANUFACTURER FOR ADDITIONAL DETAILS. ALL JUNCTION BOXES TO BE CONCEALED BEHIND ACCESS PANELS OR OTHER MEANS TO PREVENT ACCESS BY OCCUPANTS.
- 8 PROVIDE NEW LIGHT FIXTURE. EXTEND EXISTING WIRING AND CONNECT TO NEW FIXTURE.
- 9 PROVIDE WIRE CAGE ON OCCUPANCY SENSOR FOR PROTECTION.

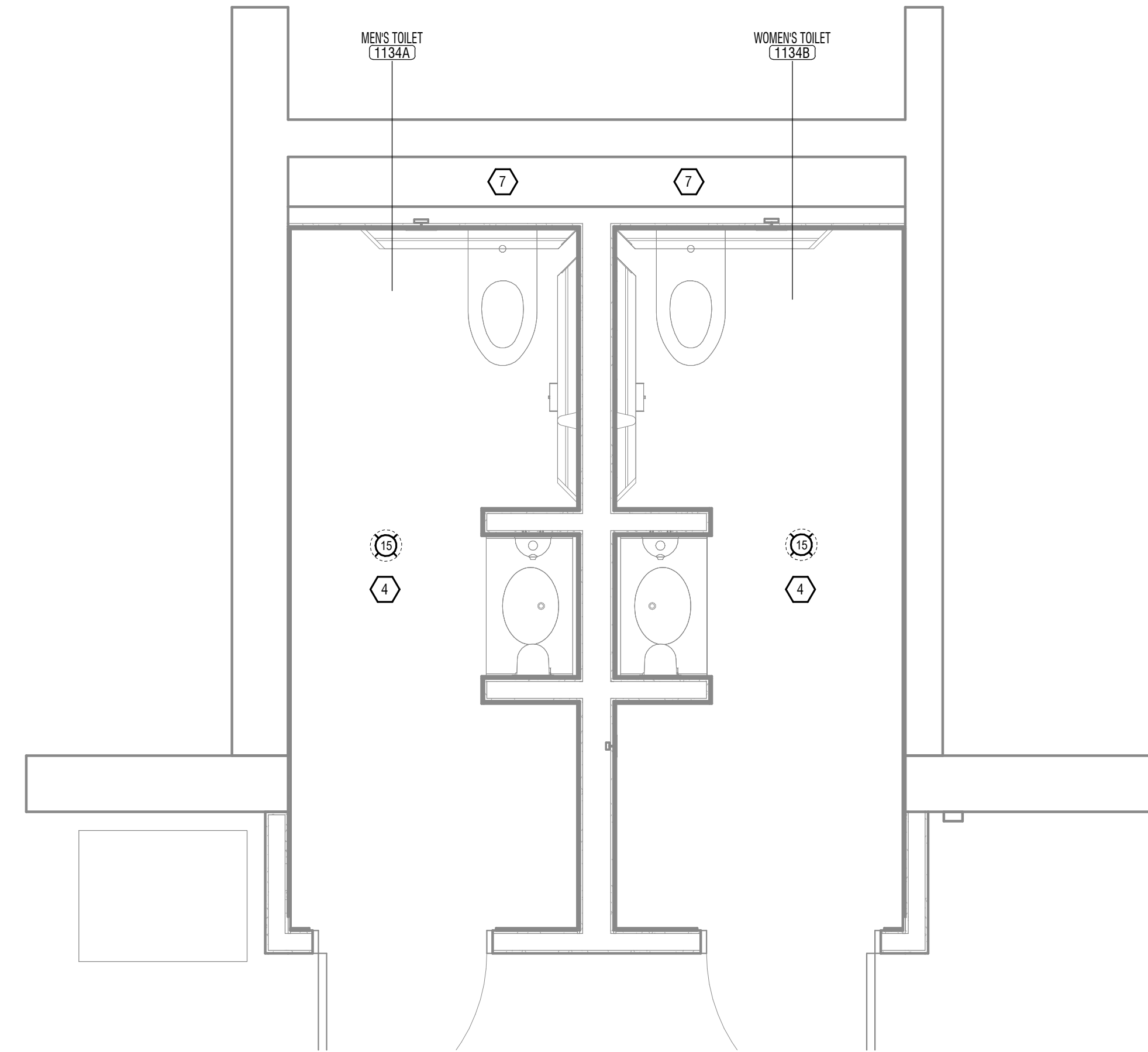
\*(NOT ALL KEYNOTES APPEAR ON ALL PAGES)\*

**GENERAL NOTES:**

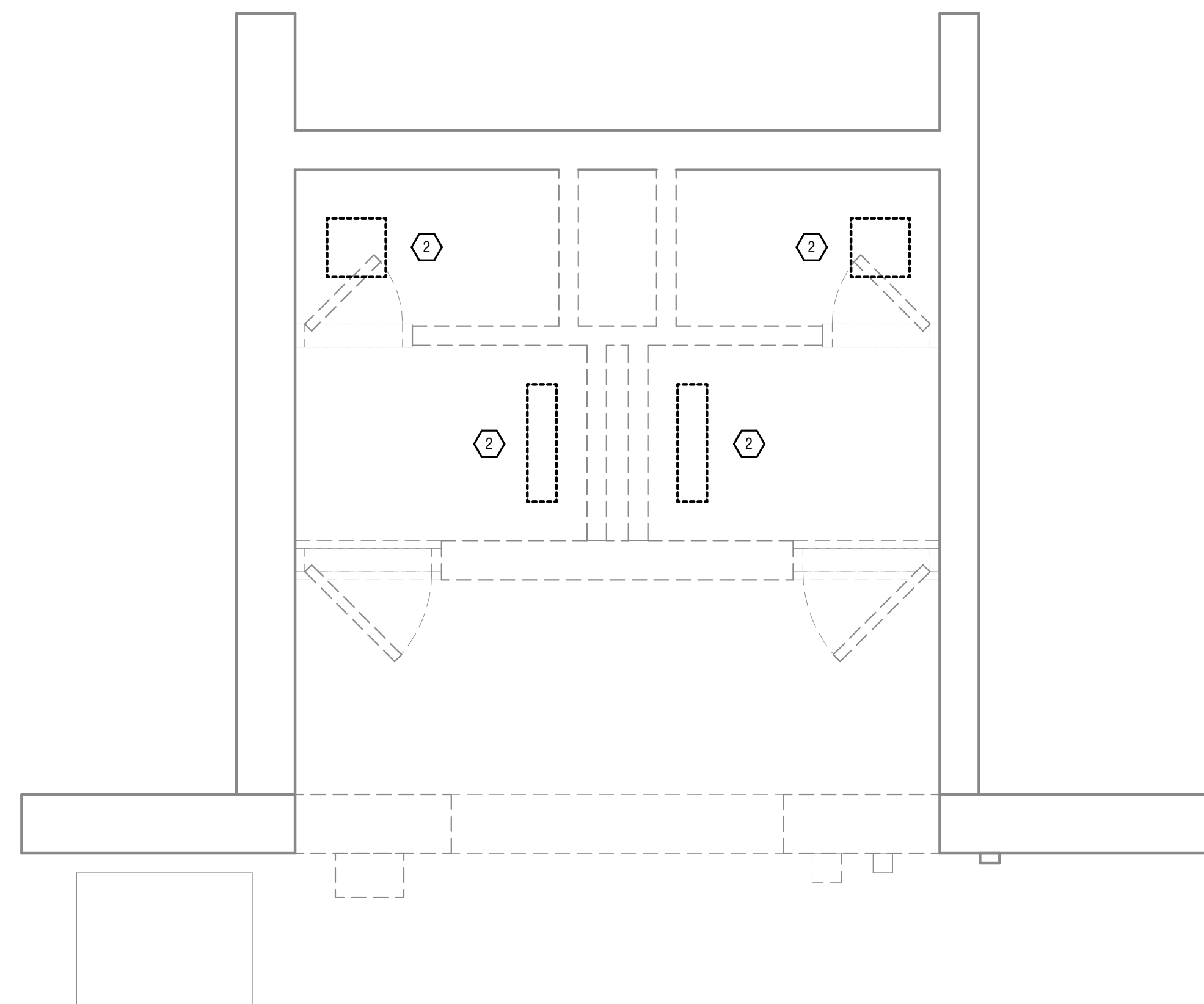
- A. SECURE AND PAY THE SERVICES OF JOHNSON CONTROLS INC FIRE PROTECTION FOR THE FOLLOWING FIRE ALARM WORK:
1. PROVIDE NEW NOTIFICATION APPLIANCES AND DEVICES. REPROGRAM TO ACCOMMODATE NEW DEVICES.
  2. RICHARD BURKE, 607.321.3950, RICHARD.BURKE@JCI.COM



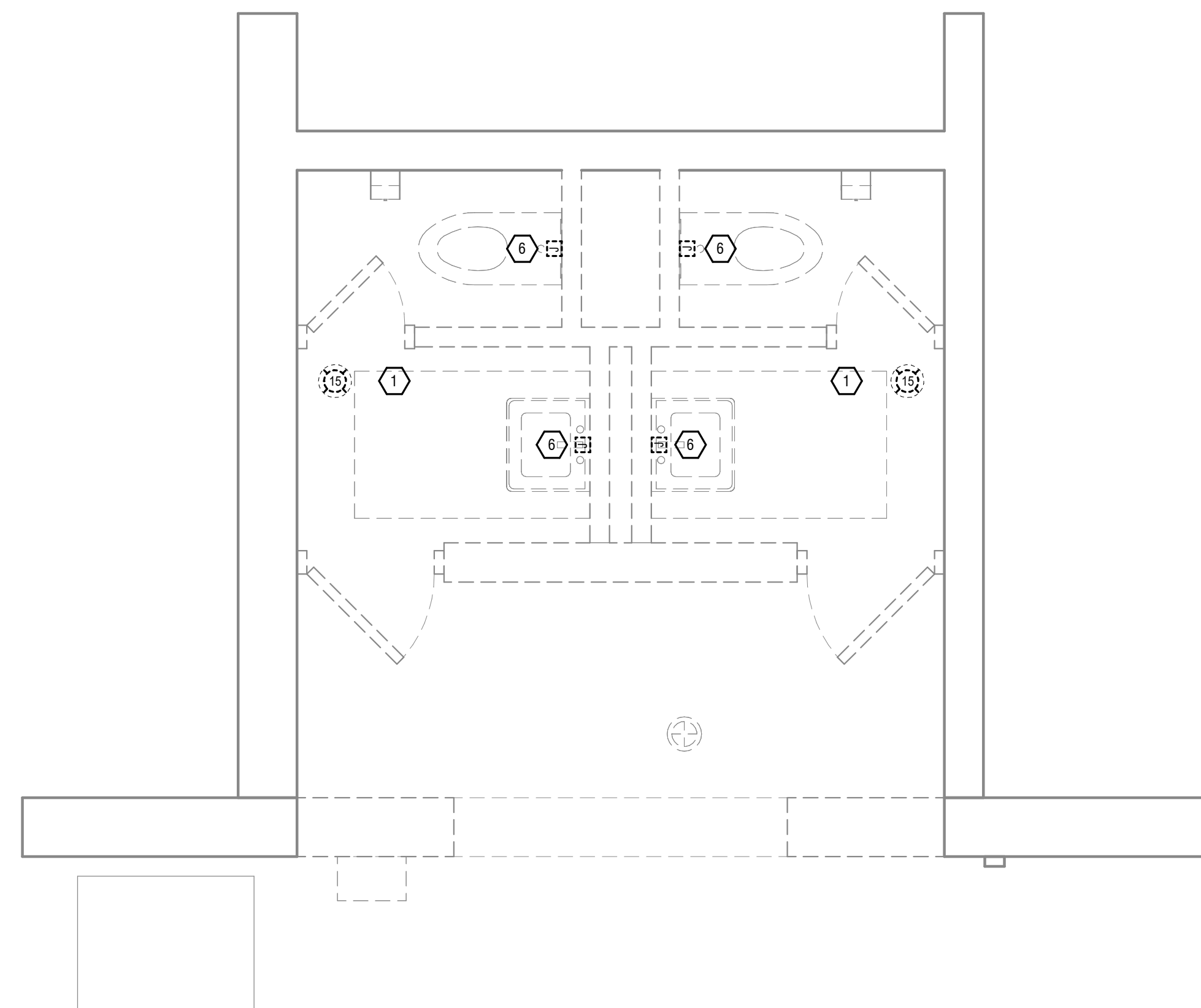
4 ROOMS 1134 A & B - LIGHTING INSTALLATION  
E-101 1/2" = 1'-0"



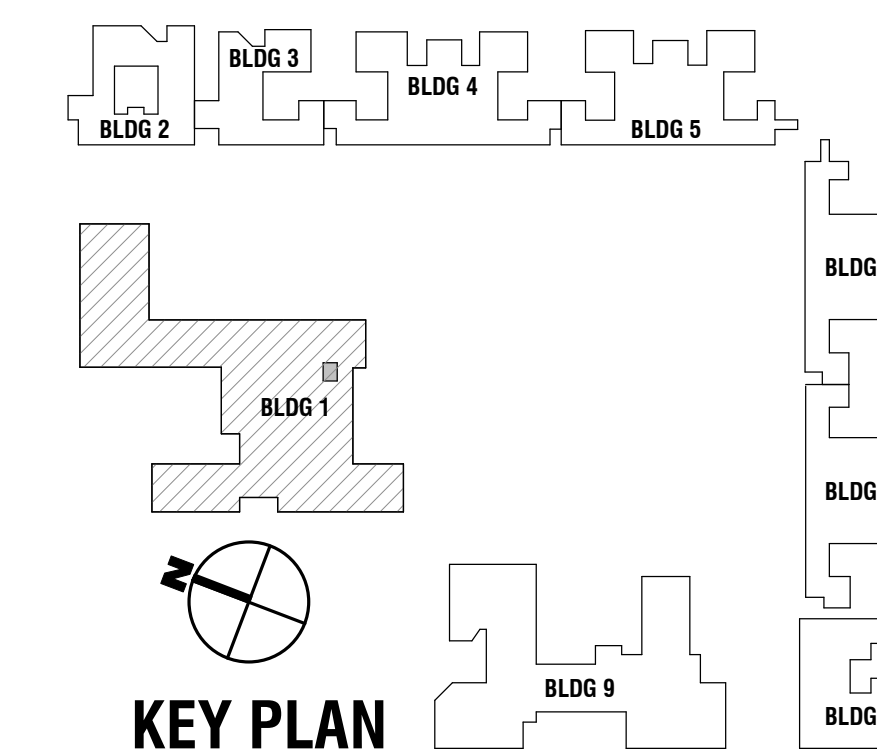
3 ROOMS 1134 A & B - ELECTRICAL INSTALLATION  
E-101 1/2" = 1'-0"



2 ROOMS 1134 A & B - LIGHTING REMOVAL  
E-101 1/2" = 1'-0"



1 ROOMS 1134 A & B - ELECTRICAL REMOVAL  
E-101 1/2" = 1'-0"



**WARNING:**  
THE ALTERATION OF THIS MATERIAL IN ANY WAY, UNLESS DONE UNDER THE DIRECTION OF A COMPARABLE PROFESSIONAL, I.E. ARCHITECT FOR AN ARCHITECT, ENGINEER FOR AN ENGINEER OR LANDSCAPE ARCHITECT FOR A LANDSCAPE ARCHITECT, IS A VIOLATION OF THE NEW YORK STATE EDUCATION LAW AND/OR REGULATIONS AND IS A CLASS 'A' MISDEMEANOR.



CONTRACT: **ELECTRICAL**

TITLE:  
RECONFIGURE  
BATHROOMS, BUILDINGS  
1, 4, 6 & 7

LOCATION:  
ELMIRA PSYCHIATRIC CENTER  
100 WASHINGTON ST.  
ELMIRA, NEW YORK

CLIENT:  
NYS OFFICE OF MENTAL HEALTH

MARK	DATE	DESCRIPTION
△	01/15/2026	REVISED DRAWING
	12/19/2025	BID DOCUMENTS

PROJECT NUMBER: **47441-E**

DESIGNED BY: RDH

DRAWN BY: JMG

FIELD CHECK: BT

APPROVED: RDH

SHEET TITLE:

**BUILDING 1 – TOILET  
ROOMS 1134A & 1134B**

DRAWING NUMBER:  
**E-101**

**WARNING:**  
THE ALTERATION OF THIS MATERIAL IN ANY WAY, UNLESS DONE UNDER THE DIRECTION OF A COMPARABLE PROFESSIONAL, I.E. ARCHITECT FOR AN ARCHITECT, ENGINEER FOR AN ENGINEER OR LANDSCAPE ARCHITECT FOR A LANDSCAPE ARCHITECT, IS A VIOLATION OF THE NEW YORK STATE EDUCATION LAW AND/OR REGULATIONS AND IS A CLASS 'A' MISDEMEANOR.



CONTRACT: **ELECTRICAL**

TITLE: RECONFIGURE BATHROOMS, BUILDINGS 1, 4, 6 & 7

LOCATION: ELMIRA PSYCHIATRIC CENTER  
100 WASHINGTON ST.  
ELMIRA, NEW YORK

CLIENT: NYS OFFICE OF MENTAL HEALTH

MARK	DATE	DESCRIPTION
⚠	01/15/2026	REVISED DRAWING
	12/19/2025	BID DOCUMENTS

PROJECT NUMBER: **47441-E**

DESIGNED BY: RDH

DRAWN BY: JMG

FIELD CHECK: BT

APPROVED: RDH

SHEET TITLE: **BUILDING 1 - TOILET ROOMS 1136A & 1136B**

DRAWING NUMBER: **E-102**

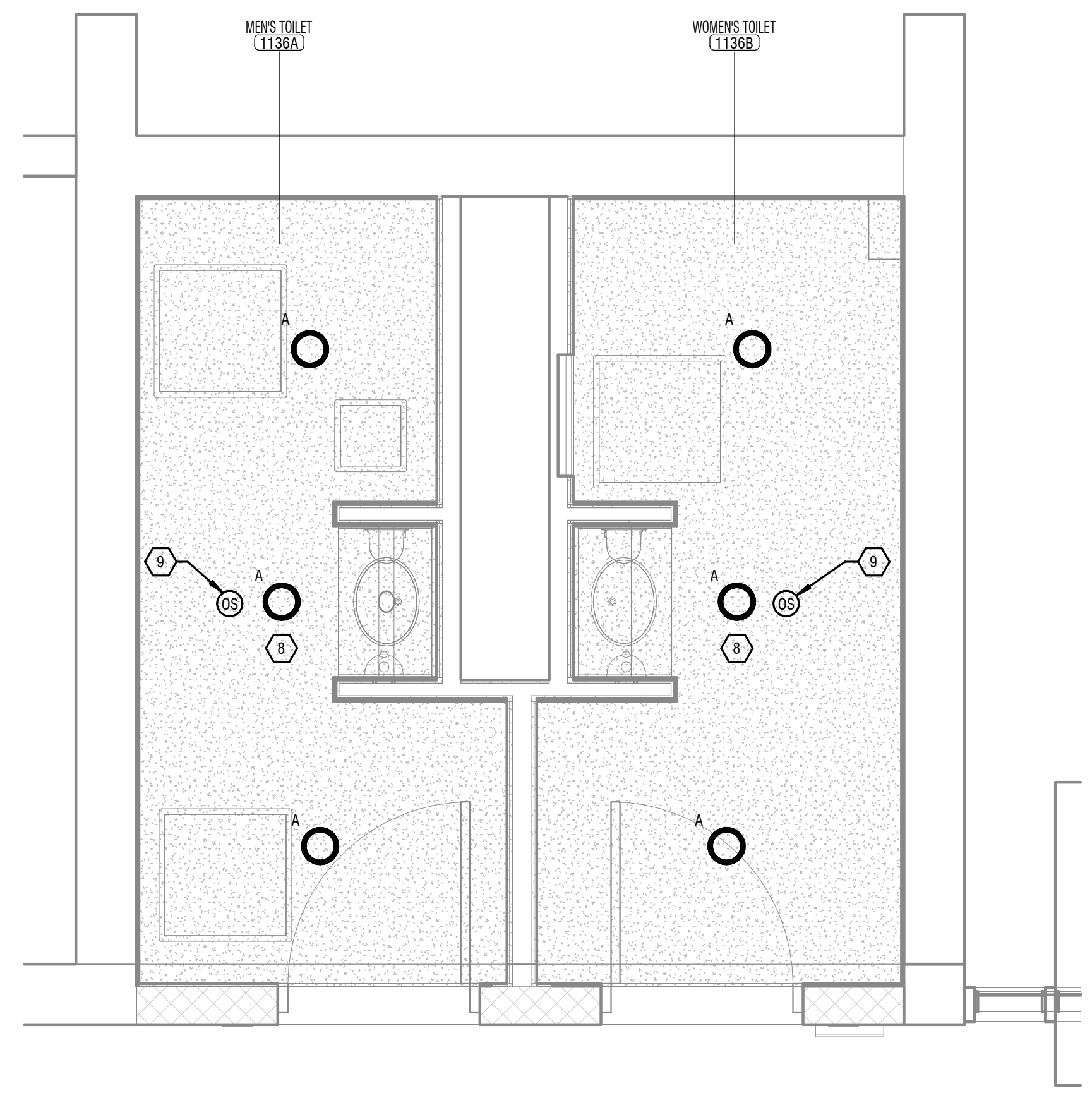
SHEET 53 of 56

**KEYED NOTES:**

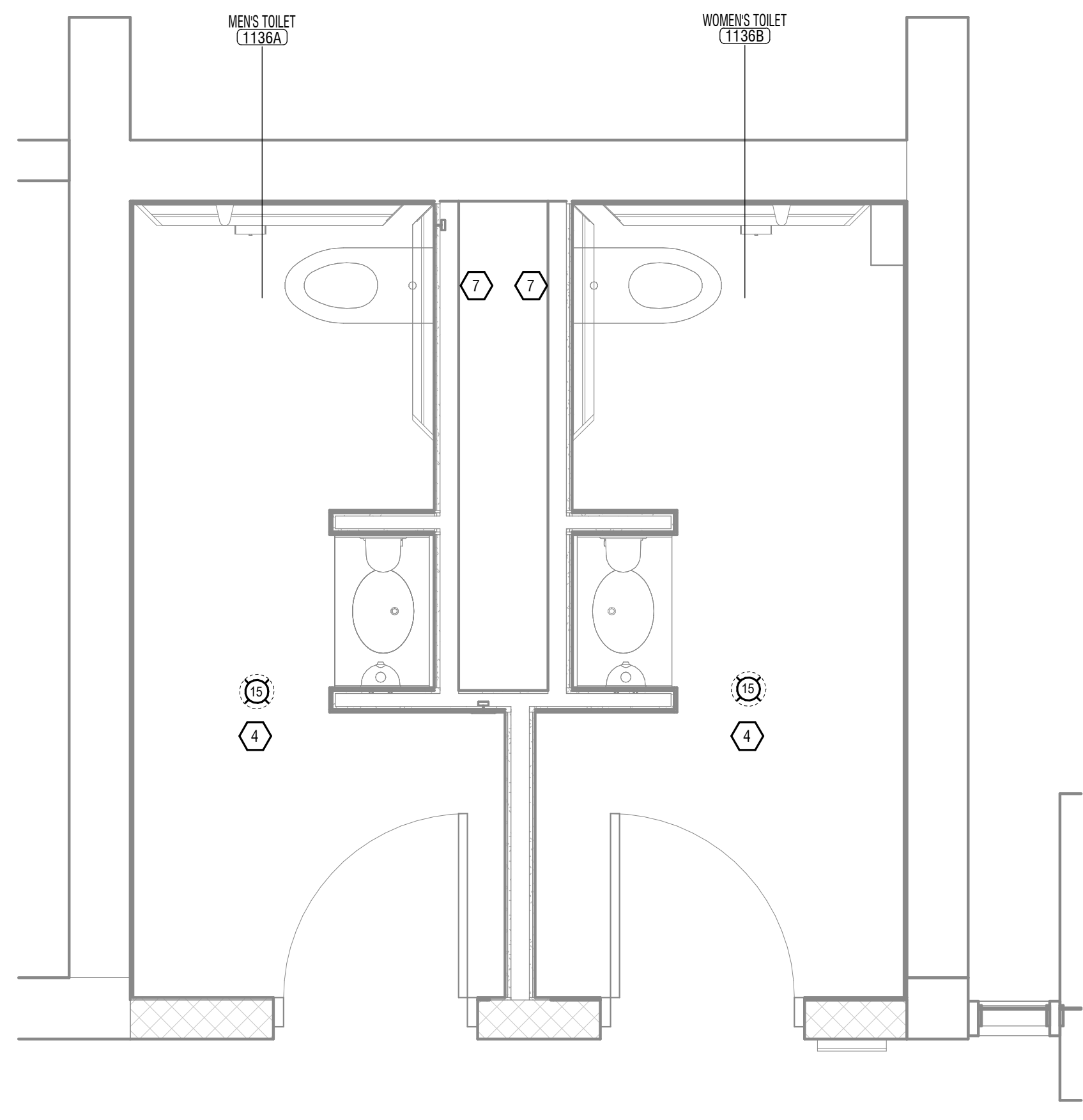
- 1 REMOVE EXISTING FIRE ALARM NOTIFICATION DEVICE. REMOVE ASSOCIATED BOX AND WIRING BACK TO CLEAR AREA. WIRING TO BE REUSED FOR NEW WORK.
  - 2 REMOVE EXISTING LIGHTING FIXTURE. REMOVE ASSOCIATED BOX AND WIRING BACK TO CLEAR AREA. BRANCH CIRCUIT TO BE REUSED FOR NEW WORK.
  - 3 REMOVE EXISTING RECEPTACLE. REMOVE ASSOCIATED BOX AND WIRING BACK TO CLEAR AREA. BRANCH CIRCUIT TO BE REUSED FOR NEW WORK.
  - 4 PROVIDE NEW FIRE ALARM NOTIFICATION DEVICE. EXTEND EXISTING WIRING AND CONNECT TO NEW DEVICE.
  - 5 REMOVE EXISTING FIRE ALARM NOTIFICATION DEVICE AND REMOVE WIRING BACK TO SOURCE.
  - 6 REMOVE JUNCTION BOX AND PULL BACK WIRING TO CLEAR AREA. REWORK WIRING TO MAINTAIN ACTIVE CIRCUITS.
  - 7 PROVIDE POWER FROM ADJACENT RECEPTACLE CIRCUIT TO POWERED FLUSH VALVE. PROVIDE (2) 4"x4" JUNCTION BOXES FOR THE TRANSFORMER AND THE SENSOR/BUTTON. REFER TO FLUSH VALVE MANUFACTURER FOR ADDITIONAL DETAILS. ALL JUNCTION BOXES TO BE CONCEALED BEHIND ACCESS PANELS OR OTHER MEANS TO PREVENT ACCESS BY OCCUPANTS.
  - 8 PROVIDE NEW LIGHT FIXTURE. EXTEND EXISTING WIRING AND CONNECT TO NEW FIXTURE.
  - 9 PROVIDE WIRE CAGE ON OCCUPANCY SENSOR FOR PROTECTION.
- \*(NOT ALL KEYNOTES APPEAR ON ALL PAGES)\*

**GENERAL NOTES:**

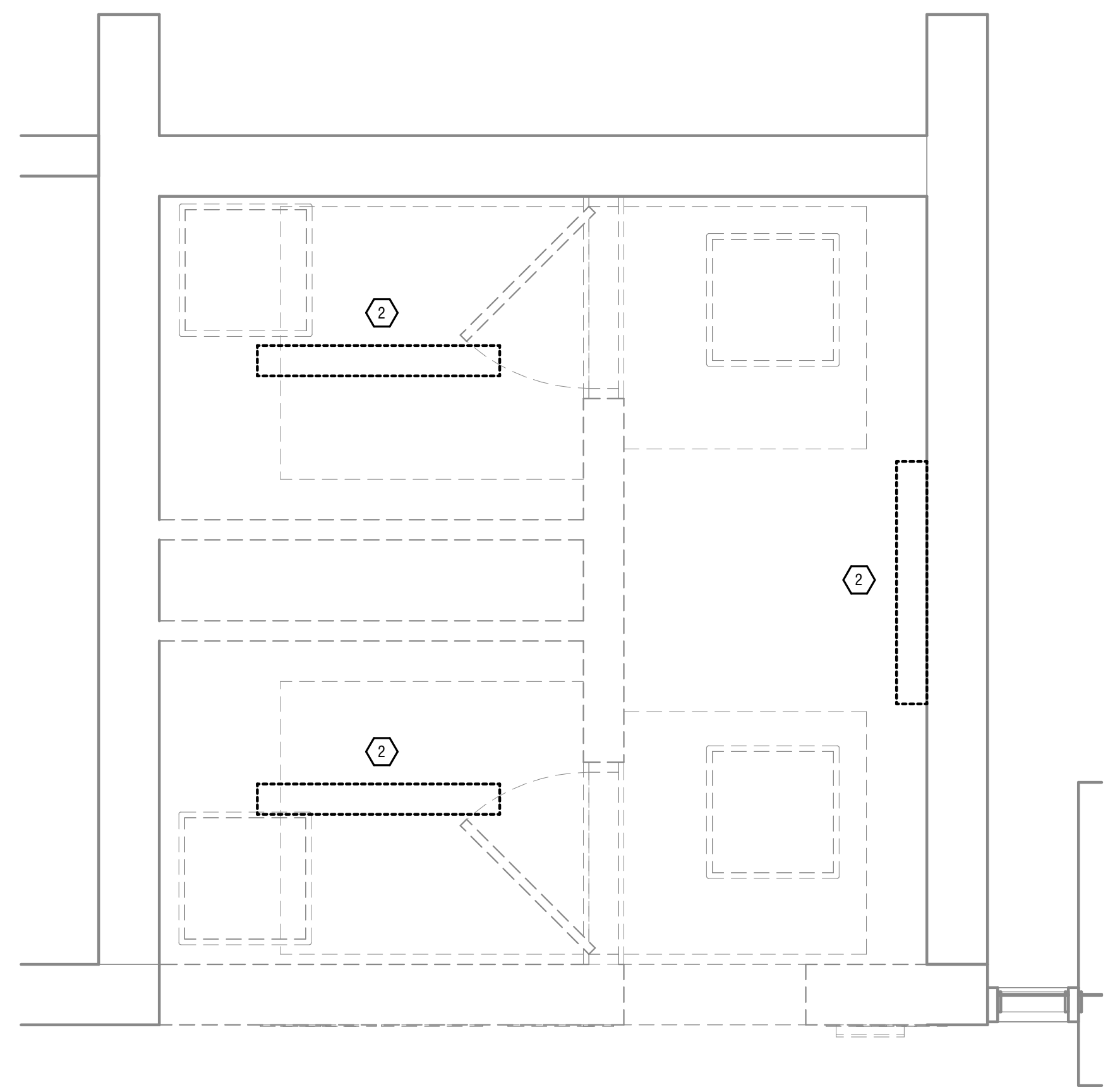
- A. SECURE AND PAY THE SERVICES OF JOHNSON CONTROLS INC FIRE PROTECTION FOR THE FOLLOWING FIRE ALARM WORK:
1. PROVIDE NEW NOTIFICATION APPLIANCES AND DEVICES. REPROGRAM TO ACCOMMODATE NEW DEVICES.
  2. JCI FIRE PROTECTION CONTACT INFO:  
RICHARD BURKE, 607.321.3950, RICHARD.BURKE@JCI.COM



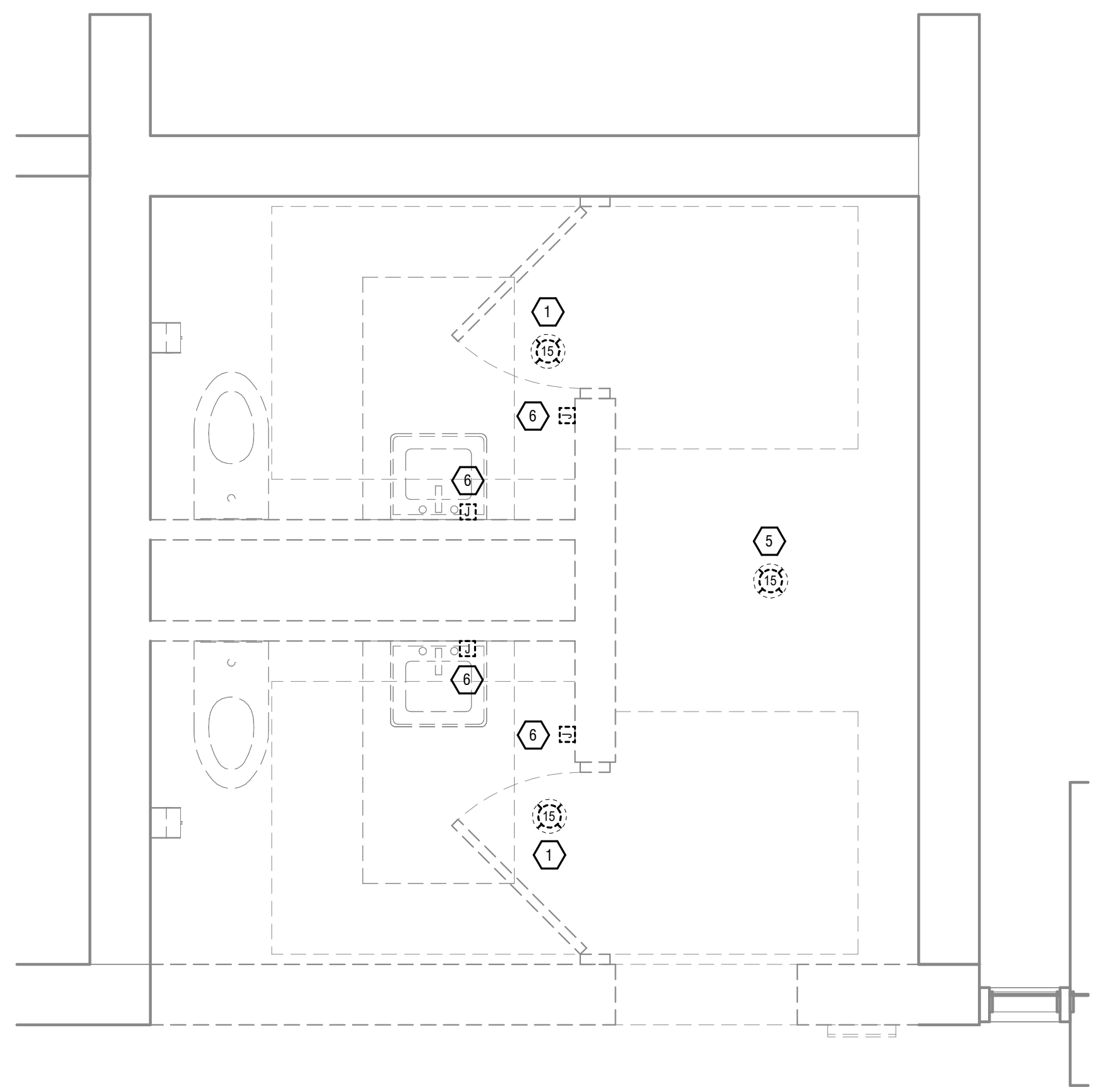
4 ROOMS 1136 A & B - LIGHTING INSTALLATION  
E-102 1/2" = 1'-0" 0' 1' 2' 4'



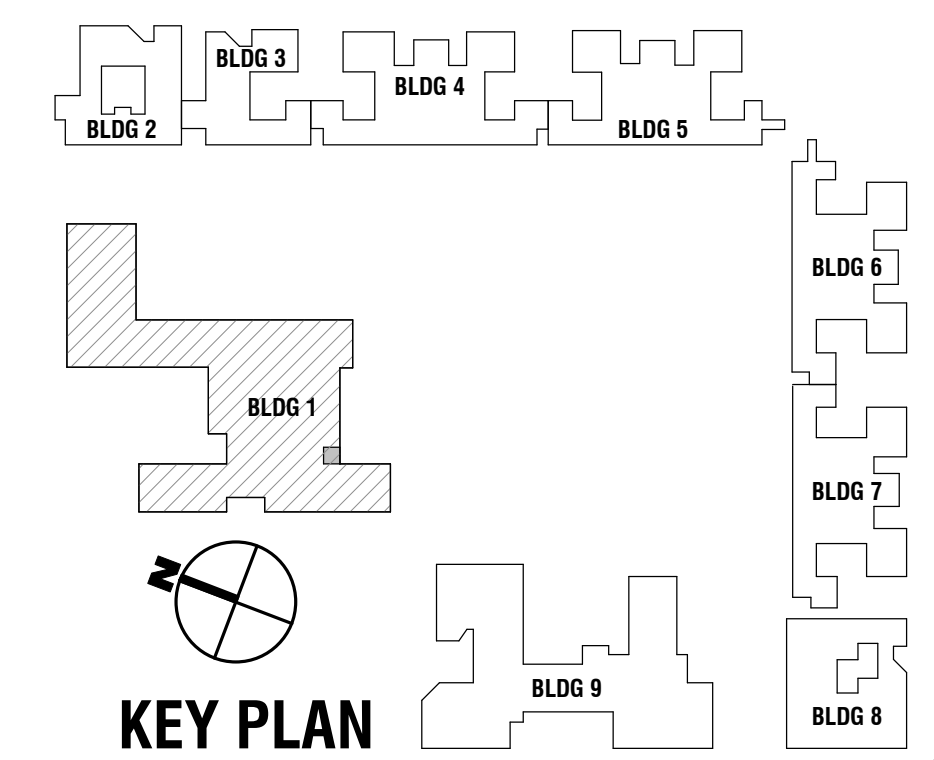
3 ROOMS 1136 A & B - ELECTRICAL INSTALLATION  
E-102 1/2" = 1'-0" 0' 1' 2' 4'



2 ROOMS 1136 A & B - LIGHTING REMOVAL  
E-102 1/2" = 1'-0" 0' 1' 2' 4'



1 ROOMS 1136 A & B - ELECTRICAL REMOVAL  
E-102 1/2" = 1'-0" 0' 1' 2' 4'



**WARNING:**  
THE ALTERATION OF THIS MATERIAL IN ANY WAY, UNLESS DONE UNDER THE DIRECTION OF A COMPARABLE PROFESSIONAL, I.E. ARCHITECT FOR AN ARCHITECT, ENGINEER FOR AN ENGINEER OR LANDSCAPE ARCHITECT FOR A LANDSCAPE ARCHITECT, IS A VIOLATION OF THE NEW YORK STATE EDUCATION LAW AND/OR REGULATIONS AND IS A CLASS A VIOLATION.



CONTRACT: **ELECTRICAL**

TITLE: RECONFIGURE BATHROOMS, BUILDINGS 1, 4, 6 & 7

LOCATION: ELMIRA PSYCHIATRIC CENTER  
100 WASHINGTON ST.  
ELMIRA, NEW YORK

CLIENT: NYS OFFICE OF MENTAL HEALTH

MARK	DATE	DESCRIPTION
⚠	01/15/2026	REVISED DRAWING
	12/19/2025	BID DOCUMENTS

PROJECT NUMBER: **47441-E**

DESIGNED BY: RDH

DRAWN BY: JMG

FIELD CHECK: BT

APPROVED: RDH

SHEET TITLE: **BUILDING 4 – TOILET ROOMS 4116 & 4117**

DRAWING NUMBER: **E-103**

SHEET 54 of 56

**KEYED NOTES:**

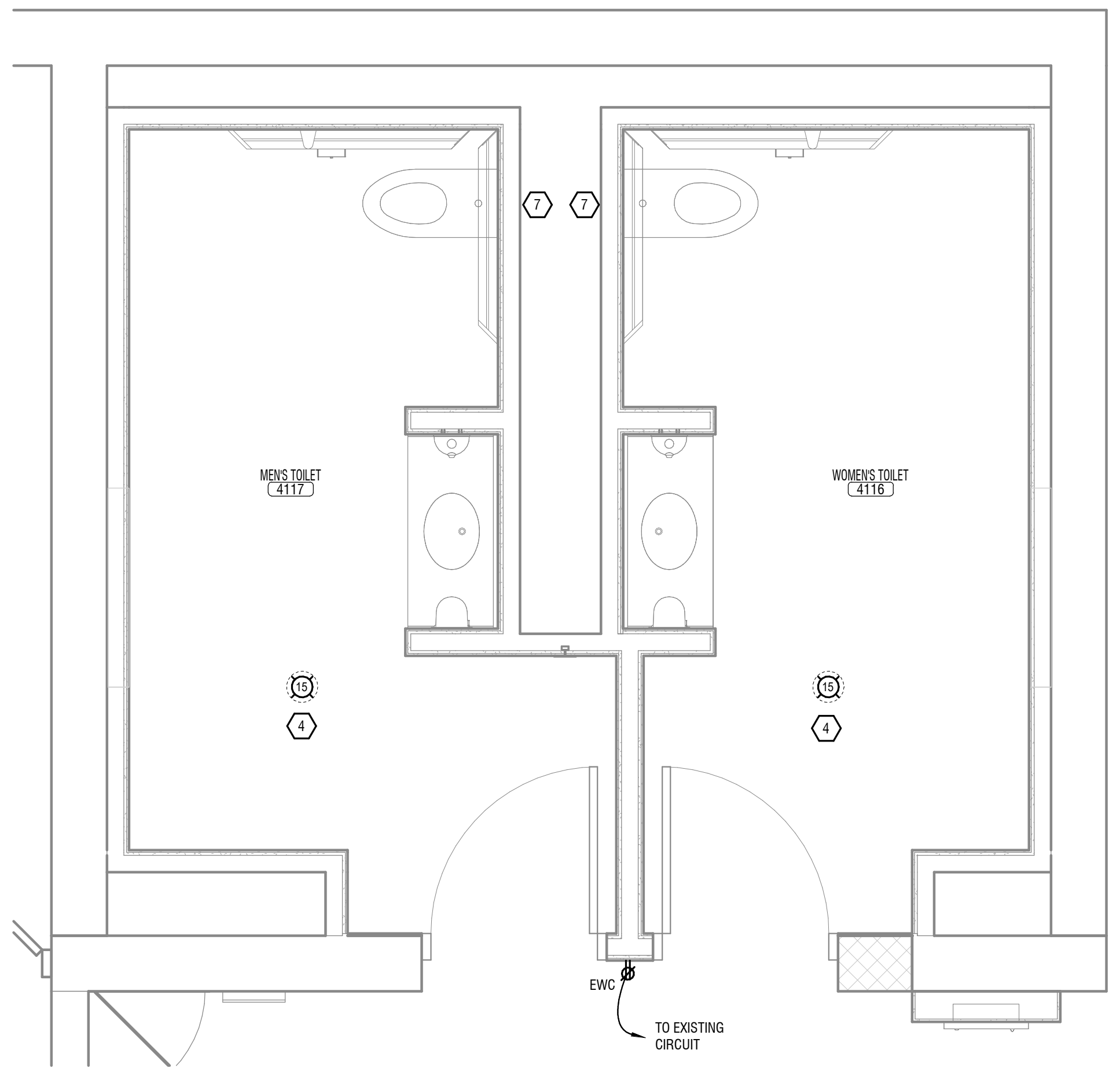
- 1 REMOVE EXISTING FIRE ALARM NOTIFICATION DEVICE. REMOVE ASSOCIATED BOX AND WIRING BACK TO CLEAR AREA. WIRING TO BE REUSED FOR NEW WORK.
- 2 REMOVE EXISTING LIGHTING FIXTURE. REMOVE ASSOCIATED BOX AND WIRING BACK TO CLEAR AREA. BRANCH CIRCUIT TO BE REUSED FOR NEW WORK.
- 3 REMOVE EXISTING RECEPTACLE. REMOVE ASSOCIATED BOX AND WIRING BACK TO CLEAR AREA. BRANCH CIRCUIT TO BE REUSED FOR NEW WORK.
- 4 PROVIDE NEW FIRE ALARM NOTIFICATION DEVICE. EXTEND EXISTING WIRING AND CONNECT TO NEW DEVICE.
- 5 REMOVE EXISTING FIRE ALARM NOTIFICATION DEVICE AND REMOVE WIRING BACK TO SOURCE.
- 6 REMOVE JUNCTION BOX AND PULL BACK WIRING TO CLEAR AREA. REWORK WIRING TO MAINTAIN ACTIVE CIRCUITS.
- 7 PROVIDE POWER FROM ADJACENT RECEPTACLE CIRCUIT TO POWERED FLUSH VALVE. PROVIDE (2) 4"x4" JUNCTION BOXES FOR THE TRANSFORMER AND THE SENSOR/BUTTON. REFER TO FLUSH VALVE MANUFACTURER FOR ADDITIONAL DETAILS. ALL JUNCTION BOXES TO BE CONCEALED BEHIND ACCESS PANELS OR OTHER MEANS TO PREVENT ACCESS BY OCCUPANTS.
- 8 PROVIDE NEW LIGHT FIXTURE. EXTEND EXISTING WIRING AND CONNECT TO NEW FIXTURE.
- 9 PROVIDE WIRE CAGE ON OCCUPANCY SENSOR FOR PROTECTION.

**GENERAL NOTES:**

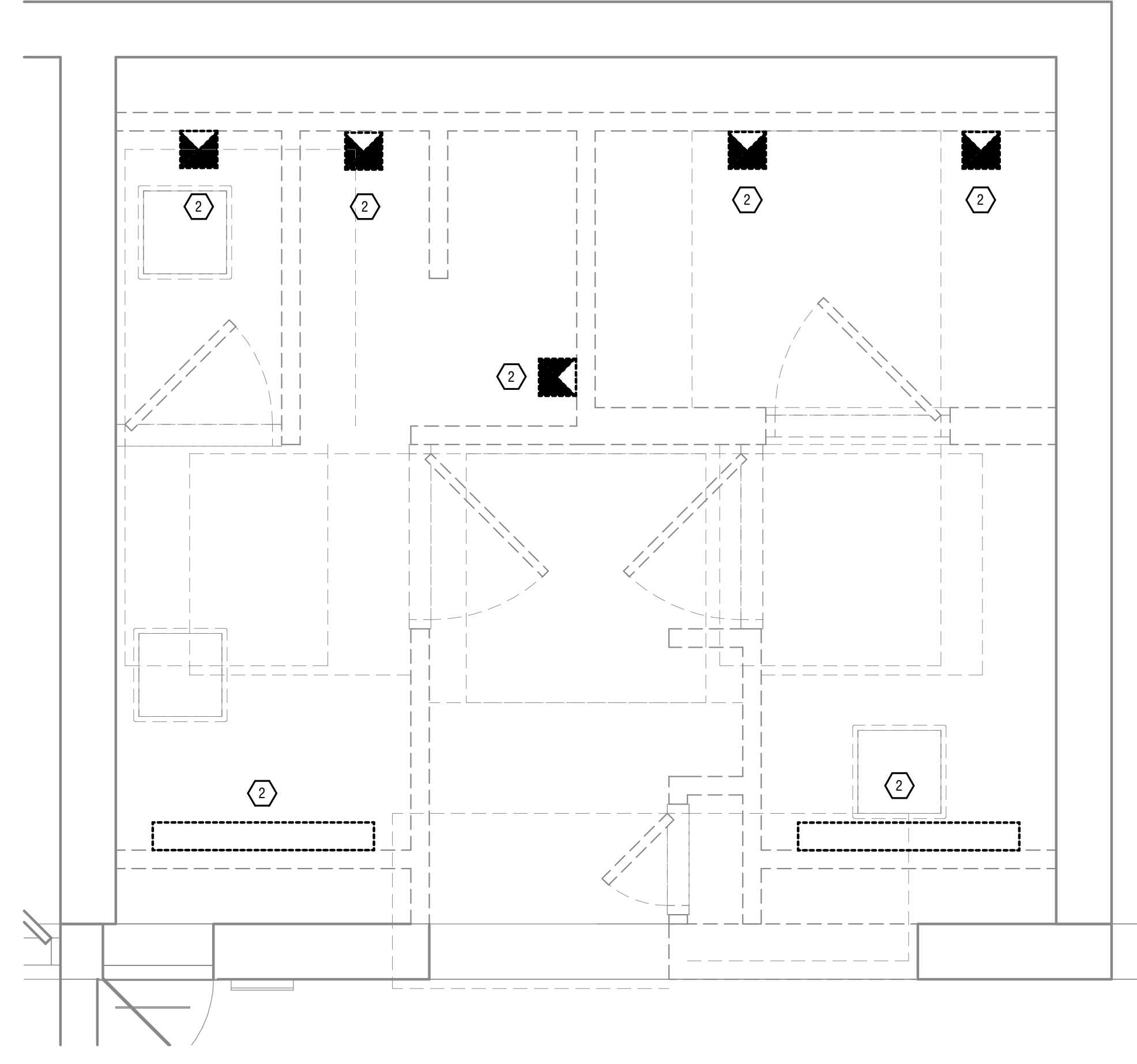
- A. SECURE AND PAY THE SERVICES OF JOHNSON CONTROLS INC FIRE PROTECTION FOR THE FOLLOWING FIRE ALARM WORK:
1. PROVIDE NEW NOTIFICATION APPLIANCES AND DEVICES. REPROGRAM TO ACCOMMODATE NEW DEVICES.
  2. RICHARD BURKE, 607.321.3950, RICHARD.BURKE@JCI.COM
- \*(NOT ALL KEYNOTES APPEAR ON ALL PAGES)\*



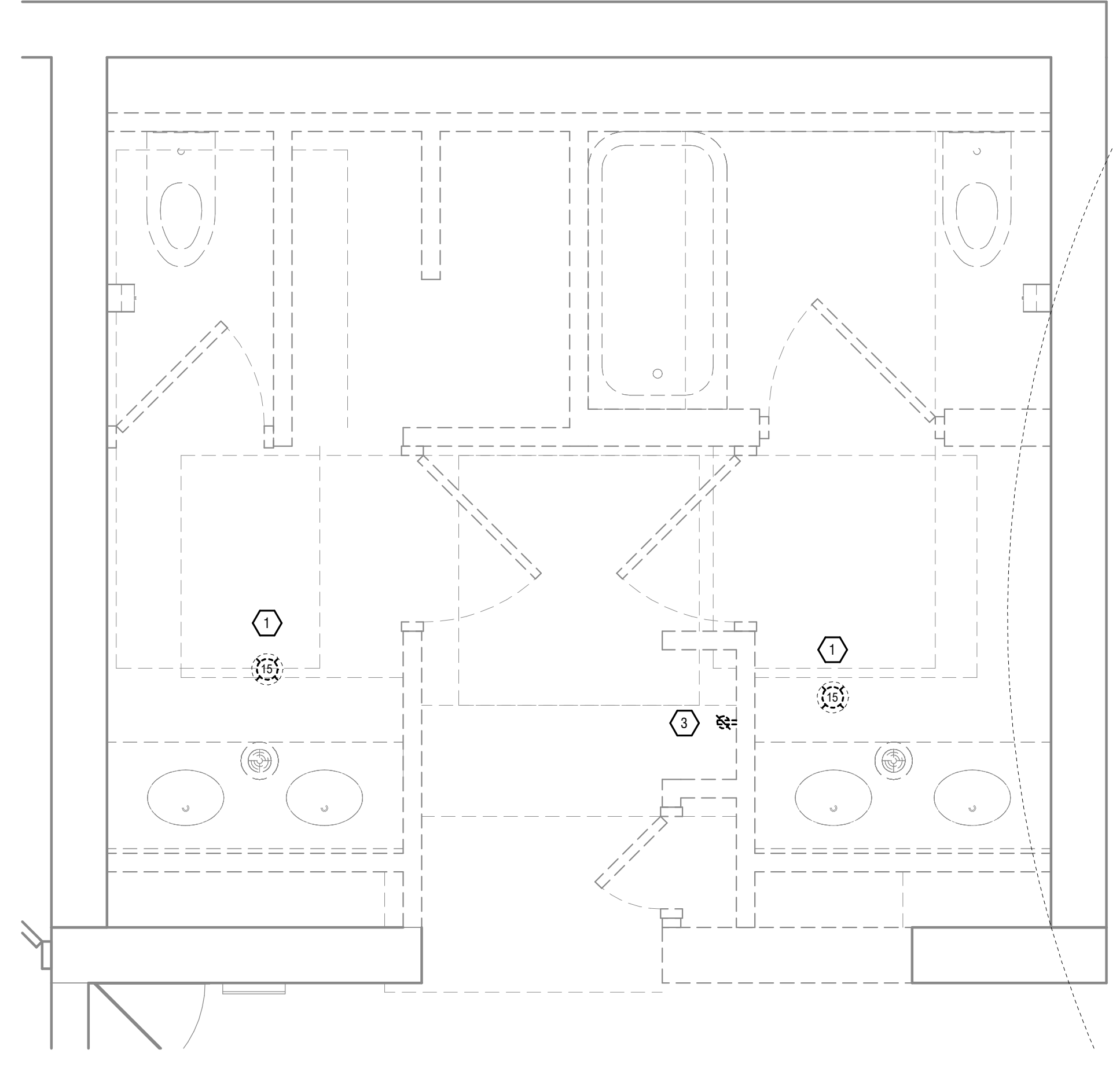
4 ROOMS 4116 & 4117 - LIGHTING INSTALLATION  
E-103 1/2" = 1'-0"



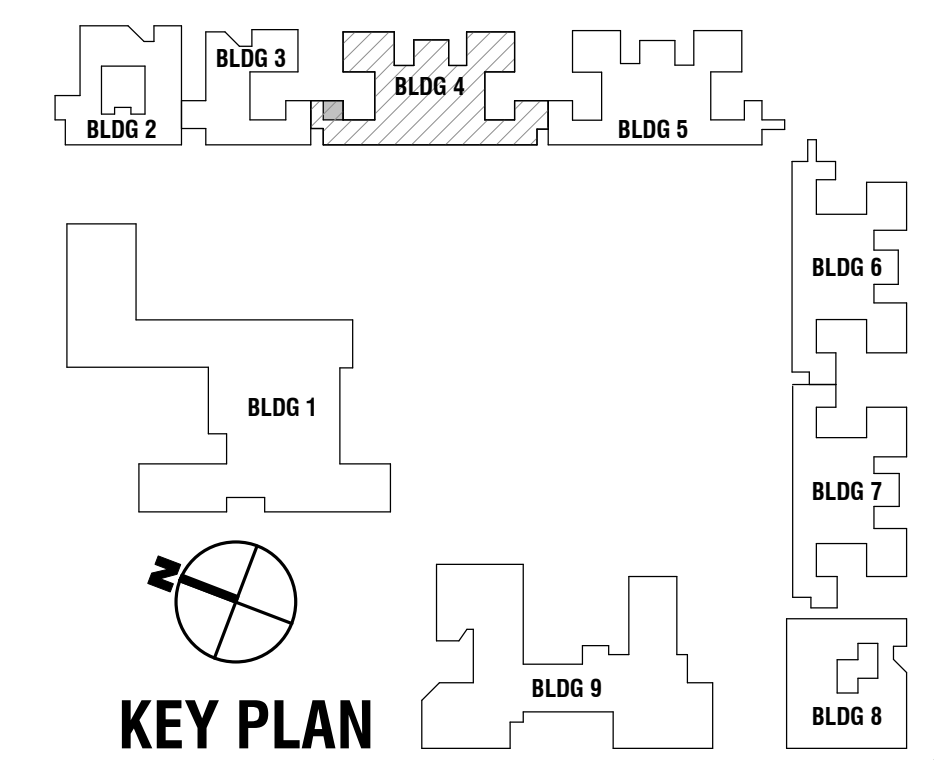
3 ROOMS 4116 & 4117 - ELECTRICAL INSTALLATION  
E-103 1/2" = 1'-0"



2 ROOMS 4116 & 4117 - LIGHTING REMOVAL  
E-103 1/2" = 1'-0"



1 ROOMS 4116 & 4117 - ELECTRICAL REMOVAL  
E-103 1/2" = 1'-0"



**WARNING:**  
THE ALTERATION OF THIS MATERIAL IN ANY WAY, UNLESS DONE UNDER THE DIRECTION OF A COMPARABLE PROFESSIONAL, I.E. ARCHITECT FOR AN ARCHITECT, ENGINEER FOR AN ENGINEER OR LANDSCAPE ARCHITECT FOR A LANDSCAPE ARCHITECT, IS A VIOLATION OF THE NEW YORK STATE EDUCATION LAW AND/OR REGULATIONS AND IS A CLASS 'A' MISDEMEANOR.

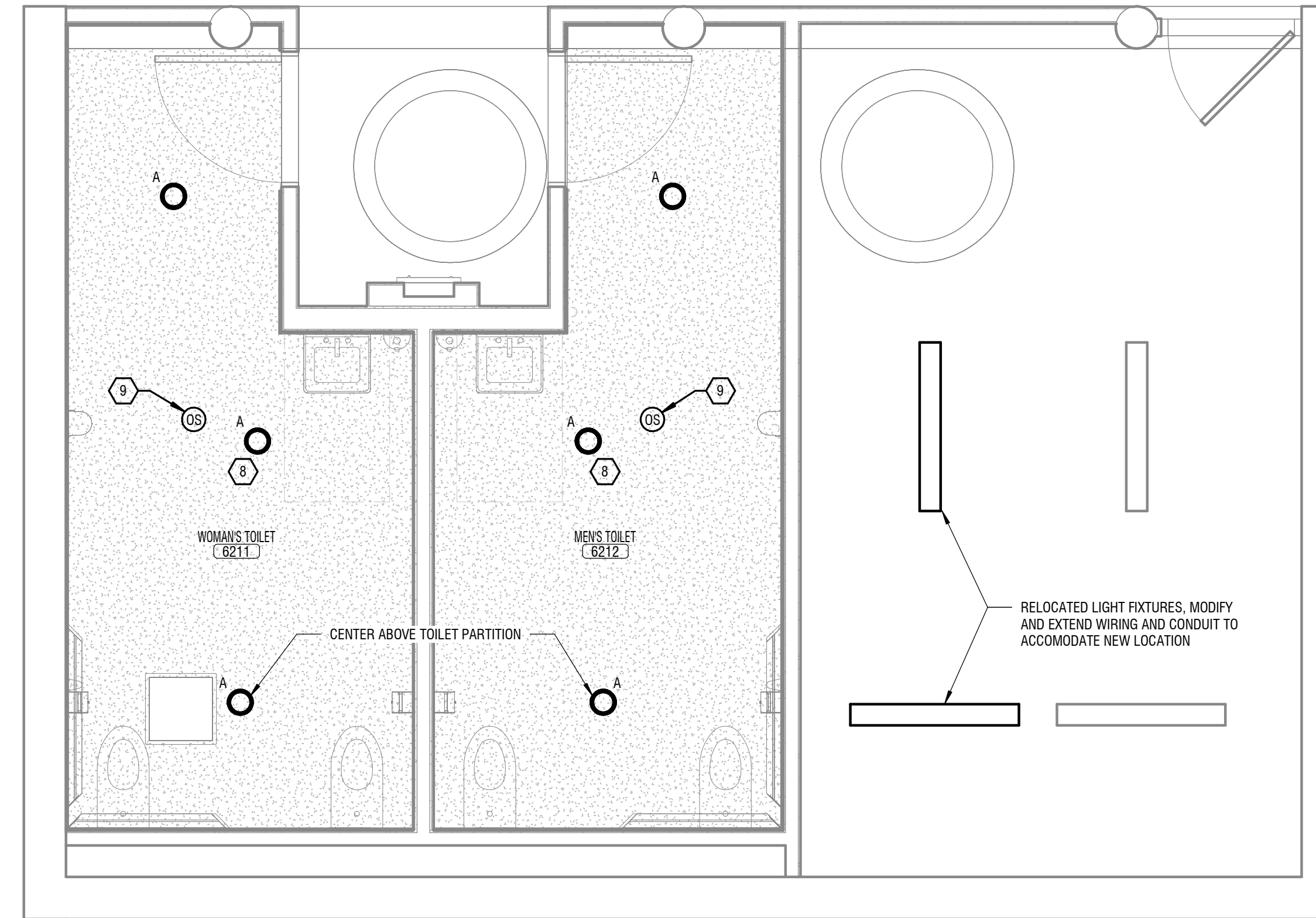


**KEYED NOTES:**

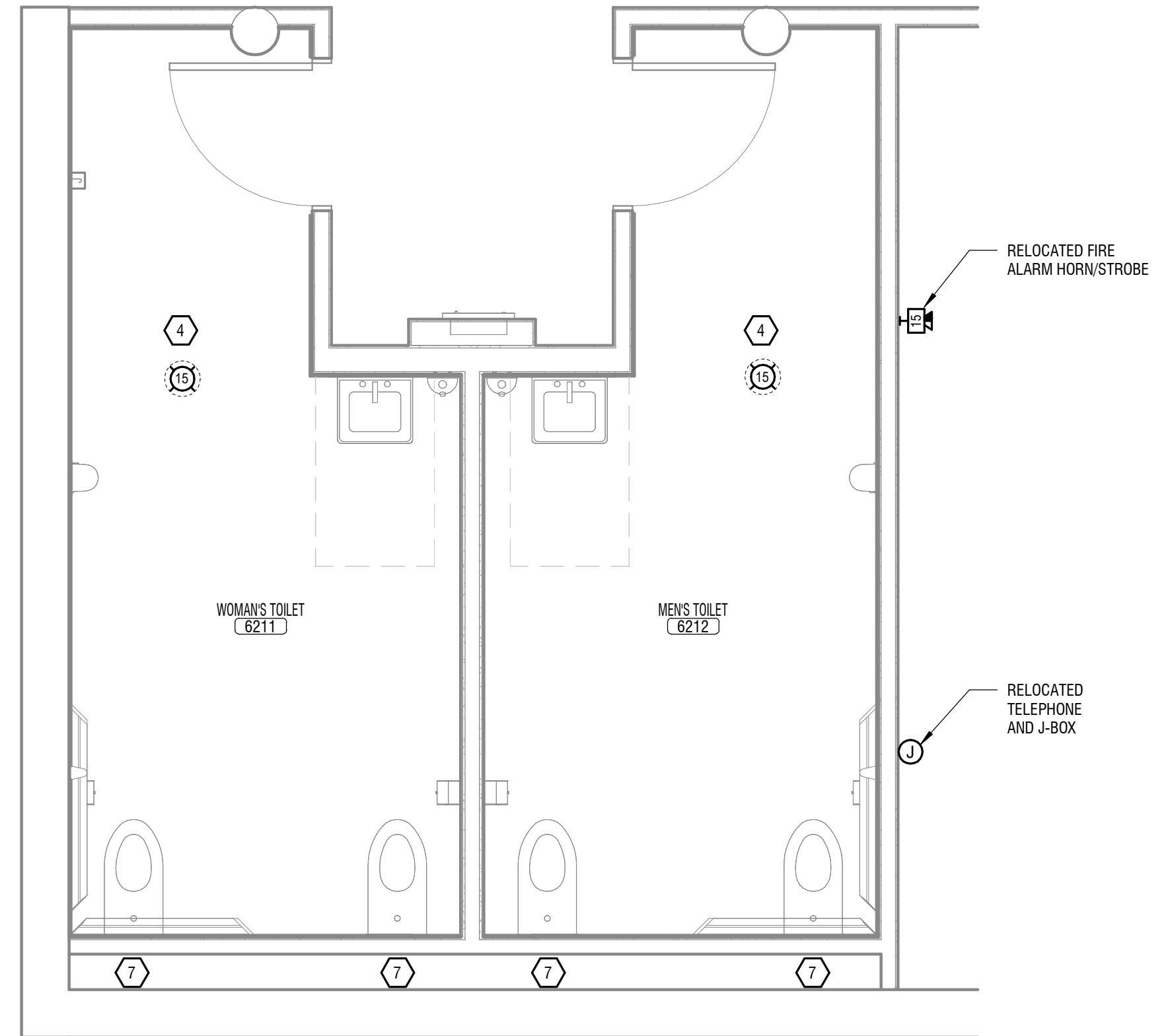
- 1 REMOVE EXISTING FIRE ALARM NOTIFICATION DEVICE. REMOVE ASSOCIATED BOX AND WIRING BACK TO CLEAR AREA. WIRING TO BE REUSED FOR NEW WORK.
  - 2 REMOVE EXISTING LIGHTING FIXTURE. REMOVE ASSOCIATED BOX AND WIRING BACK TO CLEAR AREA. BRANCH CIRCUIT TO BE REUSED FOR NEW WORK.
  - 3 REMOVE EXISTING RECEPTACLE. REMOVE ASSOCIATED BOX AND WIRING BACK TO CLEAR AREA. BRANCH CIRCUIT TO BE REUSED FOR NEW WORK.
  - 4 PROVIDE NEW FIRE ALARM NOTIFICATION DEVICE. EXTEND EXISTING WIRING AND CONNECT TO NEW DEVICE.
  - 5 REMOVE EXISTING FIRE ALARM NOTIFICATION DEVICE AND REMOVE WIRING BACK TO SOURCE.
  - 6 REMOVE JUNCTION BOX AND PULL BACK WIRING TO CLEAR AREA. REWORK WIRING TO MAINTAIN ACTIVE CIRCUITS.
  - 7 PROVIDE POWER FROM ADJACENT RECEPTACLE CIRCUIT TO POWERED FLUSH VALVE. PROVIDE (2) 4"x4" JUNCTION BOXES FOR THE TRANSFORMER AND THE SENSOR/BUTTON. REFER TO FLUSH VALVE MANUFACTURER FOR ADDITIONAL DETAILS. ALL JUNCTION BOXES TO BE CONCEALED BEHIND ACCESS PANELS OR OTHER MEANS TO PREVENT ACCESS BY OCCUPANTS.
  - 8 PROVIDE NEW LIGHT FIXTURE(S). EXTEND EXISTING WIRING AND CONNECT TO NEW FIXTURE(S).
  - 9 PROVIDE WIRE CAGE ON OCCUPANCY SENSOR FOR PROTECTION.
- \*(NOT ALL KEYNOTES APPEAR ON ALL PAGES)\*

**GENERAL NOTES:**

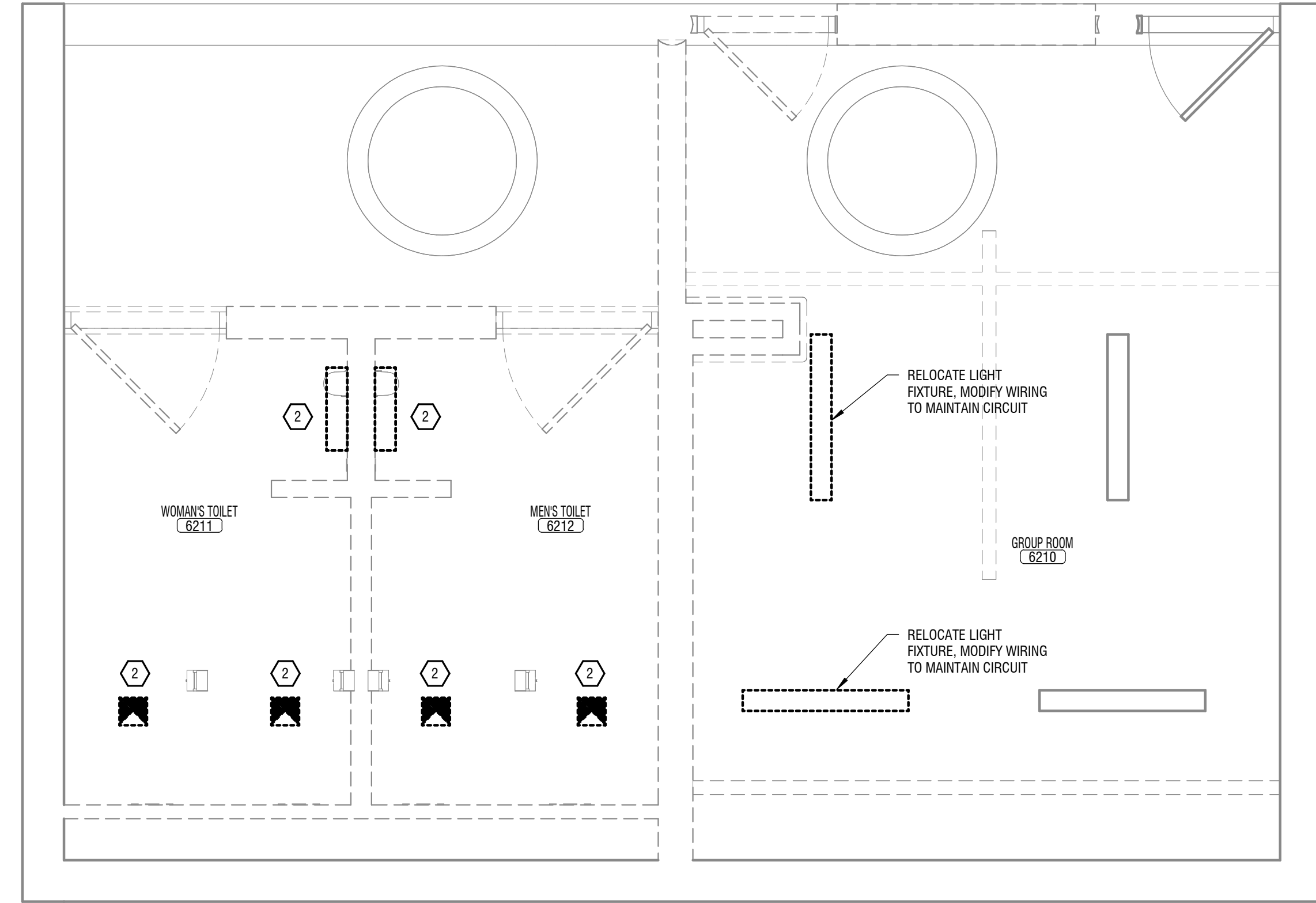
- A. SECURE AND PAY THE SERVICES OF JOHNSON CONTROLS INC FIRE PROTECTION FOR THE FOLLOWING FIRE ALARM WORK:
1. PROVIDE NEW NOTIFICATION APPLIANCES AND DEVICES. REPROGRAM TO ACCOMMODATE NEW DEVICES.
  2. JCI FIRE PROTECTION CONTACT INFO:  
RICHARD BURKE, 607.321.3950, RICHARD.BURKE@JCI.COM



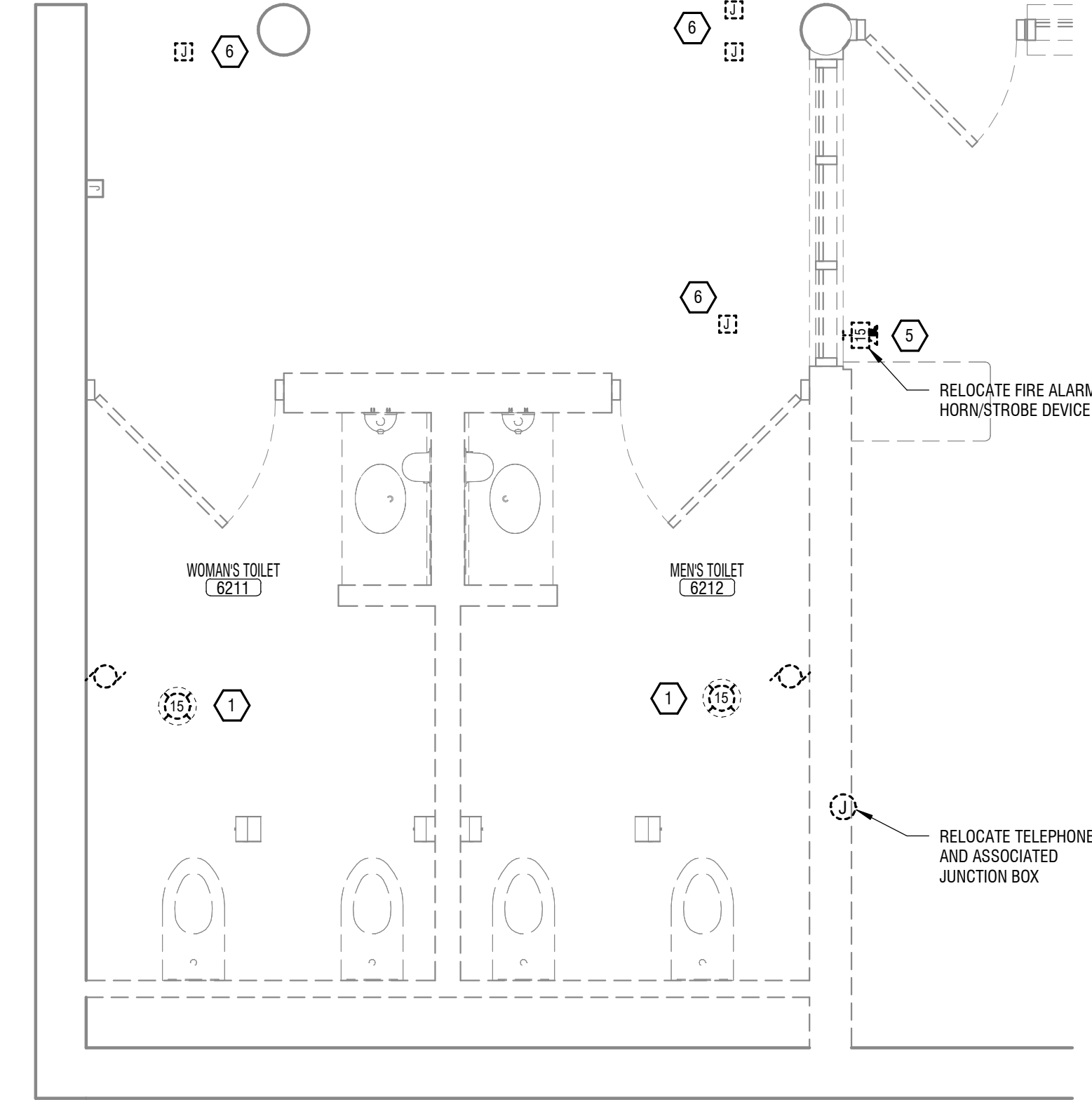
4 ROOMS 6211 & 6212 - LIGHTING INSTALLATION  
E-104 3/8" = 1'-0" 0' 1' 2' 4' 8'



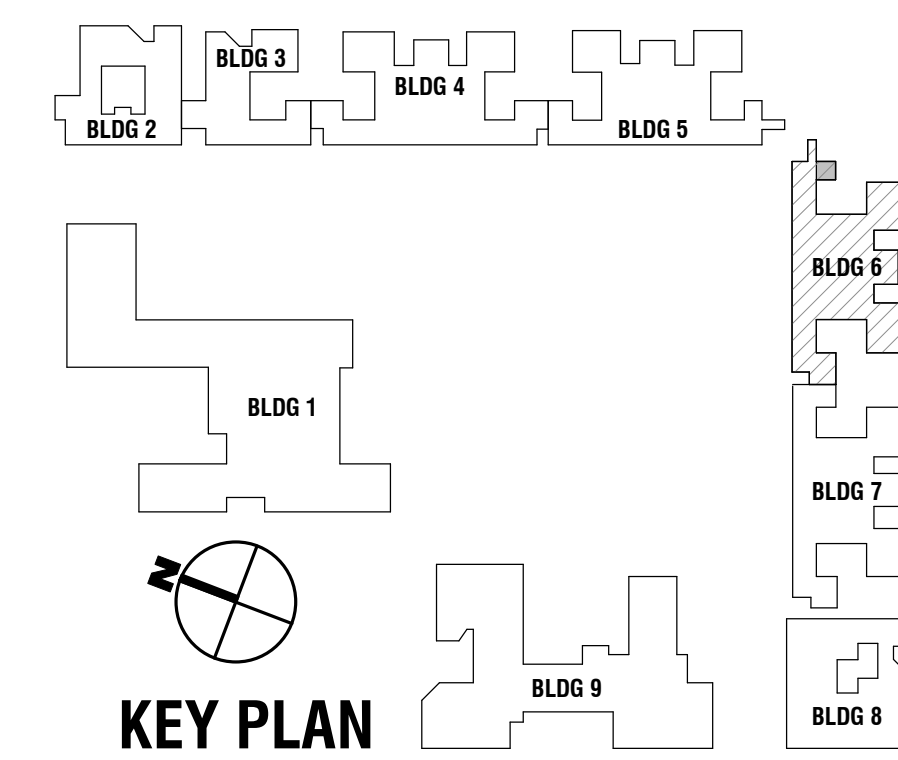
3 ROOMS 6211 & 6212 - ELECTRICAL INSTALLATION  
E-104 3/8" = 1'-0" 0' 1' 2' 4' 8'



2 ROOMS 6211 & 6212 - LIGHTING REMOVAL  
E-104 3/8" = 1'-0" 0' 1' 2' 4' 8'



1 ROOMS 6211 & 6212 - ELECTRICAL REMOVAL  
E-104 3/8" = 1'-0" 0' 1' 2' 4' 8'



CONTRACT: **ELECTRICAL**

TITLE: RECONFIGURE BATHROOMS, BUILDINGS 1, 4, 6 & 7

LOCATION: ELMIRA PSYCHIATRIC CENTER  
100 WASHINGTON ST.  
ELMIRA, NEW YORK

CLIENT: NYS OFFICE OF MENTAL HEALTH

MARK	DATE	DESCRIPTION
⚠	01/15/2026	REVISED DRAWING
	12/19/2025	BID DOCUMENTS

PROJECT NUMBER: **47441-E**

DESIGNED BY: RDH

DRAWN BY: JMG

FIELD CHECK: BT

APPROVED: RDH

SHEET TITLE: **BUILDING 6 - TOILET ROOMS 6211 & 6212**

DRAWING NUMBER: **E-104**

SHEET 55 of 56

**WARNING:**  
THE ALTERATION OF THIS MATERIAL IN ANY WAY, UNLESS DONE UNDER THE DIRECTION OF A COMPARABLE PROFESSIONAL, I.E. ARCHITECT FOR AN ARCHITECT, ENGINEER FOR AN ENGINEER OR LANDSCAPE ARCHITECT FOR A LANDSCAPE ARCHITECT, IS A VIOLATION OF THE NEW YORK STATE EDUCATION LAW AND/OR REGULATIONS.



CONTRACT: **ELECTRICAL**  
TITLE: RECONFIGURE BATHROOMS, BUILDINGS 1, 4, 6 & 7  
LOCATION: ELMIRA PSYCHIATRIC CENTER, 100 WASHINGTON ST., ELMIRA, NEW YORK  
CLIENT: NYS OFFICE OF MENTAL HEALTH

MARK	DATE	DESCRIPTION
⚠	01/15/2026	REVISED DRAWING
	12/19/2025	BID DOCUMENTS

PROJECT NUMBER: **47441-E**  
DESIGNED BY: RDH  
DRAWN BY: JMG  
FIELD CHECK: BT  
APPROVED: RDH  
SHEET TITLE:

**BUILDING 7 – TOILET ROOMS 7116 & 7117**  
DRAWING NUMBER: **E-105**  
SHEET 56 of 56

**KEYED NOTES:**

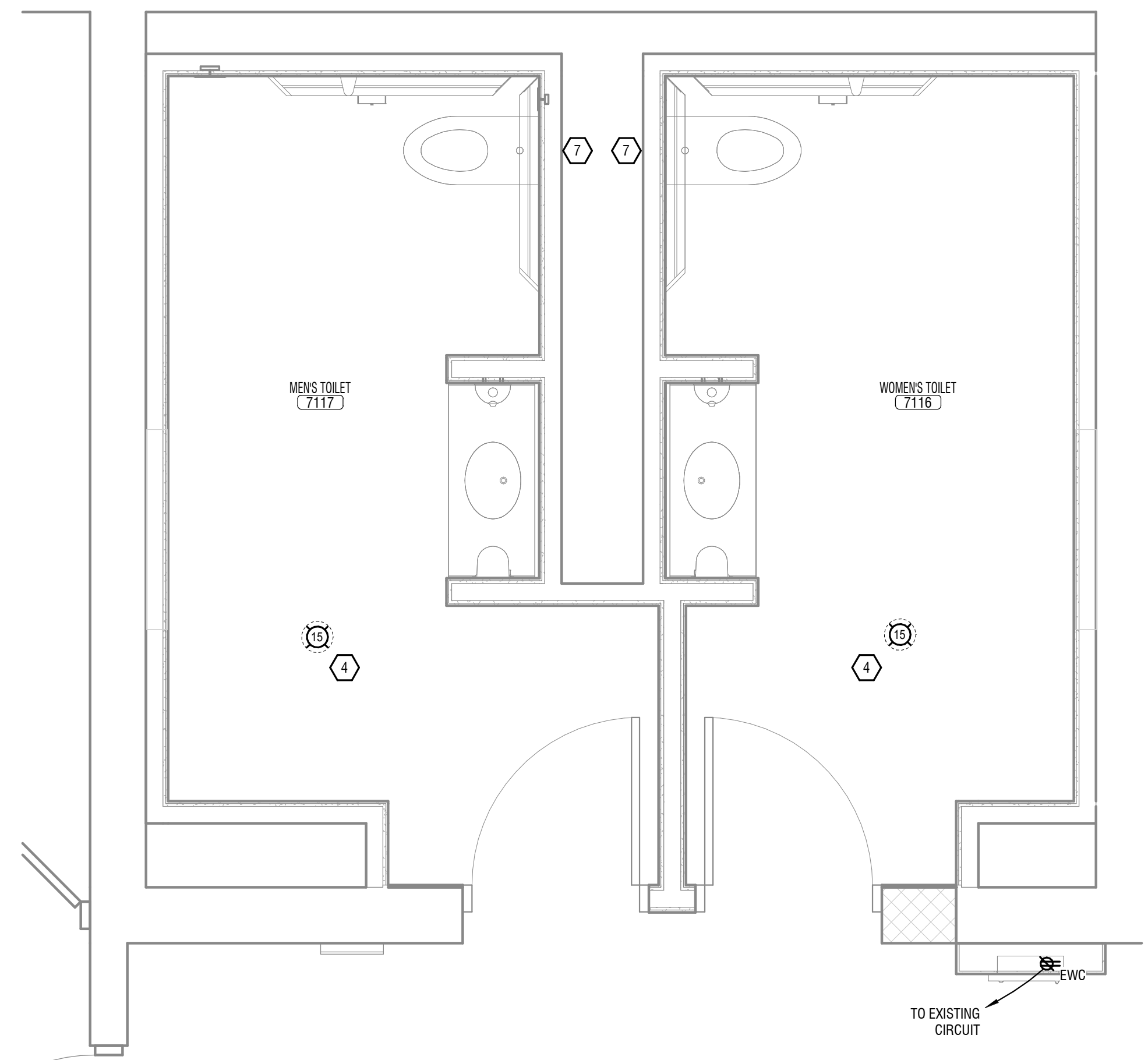
- 1 REMOVE EXISTING FIRE ALARM NOTIFICATION DEVICE. REMOVE ASSOCIATED BOX AND WIRING BACK TO CLEAR AREA. WIRING TO BE REUSED FOR NEW WORK.
  - 2 REMOVE EXISTING LIGHTING FIXTURE. REMOVE ASSOCIATED BOX AND WIRING BACK TO CLEAR AREA. BRANCH CIRCUIT TO BE REUSED FOR NEW WORK.
  - 3 REMOVE EXISTING RECEPTACLE. REMOVE ASSOCIATED BOX AND WIRING BACK TO CLEAR AREA. BRANCH CIRCUIT TO BE REUSED FOR NEW WORK.
  - 4 PROVIDE NEW FIRE ALARM NOTIFICATION DEVICE. EXTEND EXISTING WIRING AND CONNECT TO NEW DEVICE.
  - 5 REMOVE EXISTING FIRE ALARM NOTIFICATION DEVICE AND REMOVE WIRING BACK TO SOURCE.
  - 6 REMOVE JUNCTION BOX AND PULL BACK WIRING TO CLEAR AREA. REWORK WIRING TO MAINTAIN ACTIVE CIRCUITS.
  - 7 PROVIDE POWER FROM ADJACENT RECEPTACLE CIRCUIT TO POWERED FLUSH VALVE. PROVIDE (2) 4"x4" JUNCTION BOXES FOR THE TRANSFORMER AND THE SENSOR/BUTTON. REFER TO FLUSH VALVE MANUFACTURER FOR ADDITIONAL DETAILS. ALL JUNCTION BOXES TO BE CONCEALED BEHIND ACCESS PANELS OR OTHER MEANS TO PREVENT ACCESS BY OCCUPANTS.
  - 8 PROVIDE NEW LIGHT FIXTURE. EXTEND EXISTING WIRING AND CONNECT TO NEW FIXTURE.
  - 9 PROVIDE WIRE CAGE ON OCCUPANCY SENSOR FOR PROTECTION.
- \*(NOT ALL KEYNOTES APPEAR ON ALL PAGES)\*

**GENERAL NOTES:**

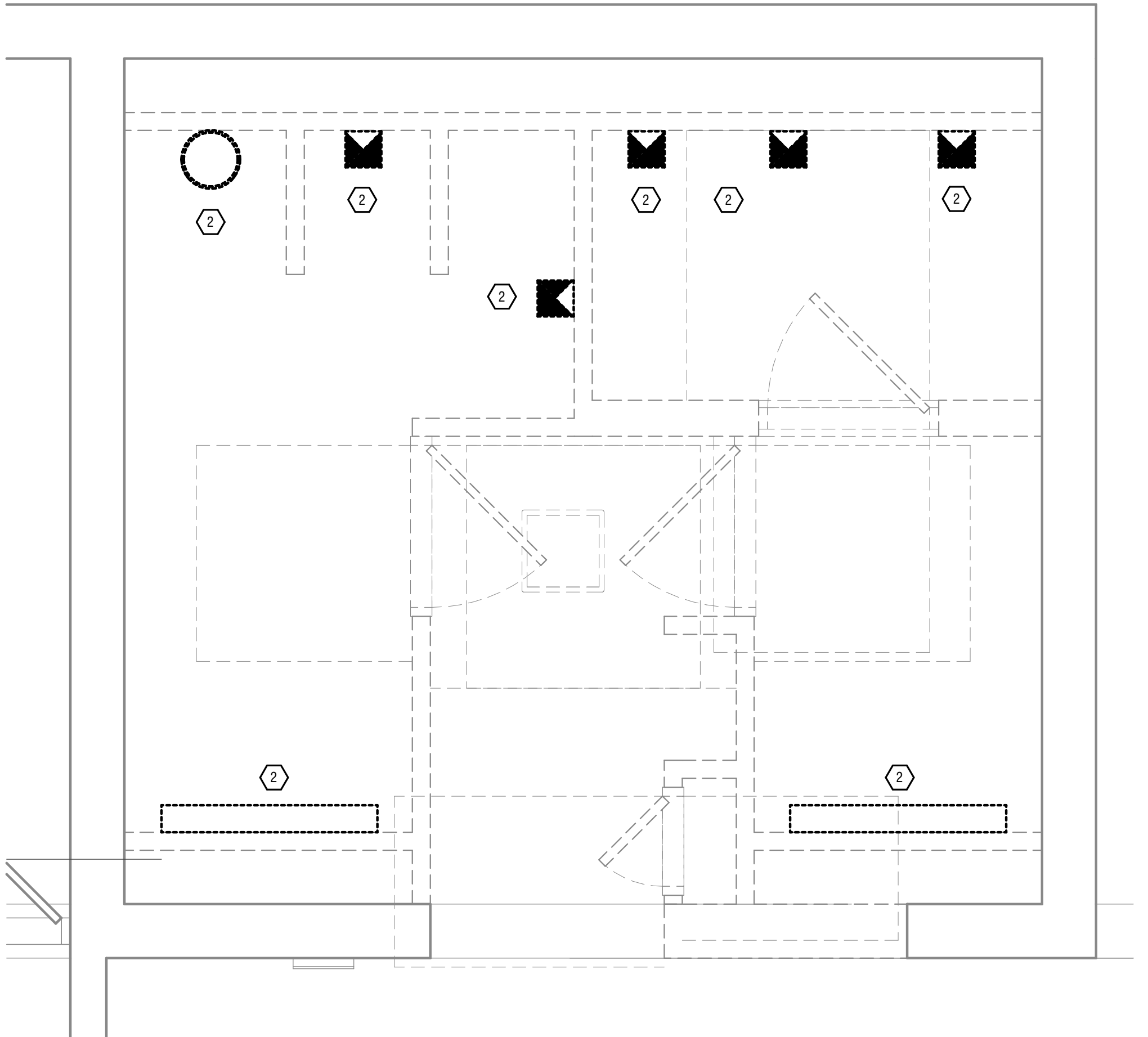
- A. SECURE AND PAY THE SERVICES OF JOHNSON CONTROLS INC FIRE PROTECTION FOR THE FOLLOWING FIRE ALARM WORK:
1. PROVIDE NEW NOTIFICATION APPLIANCES AND DEVICES. REPROGRAM TO ACCOMMODATE NEW DEVICES.
  2. JCI FIRE PROTECTION CONTACT INFO:  
RICHARD BURKE, 607.321.3950, RICHARD.BURKE@JCI.COM



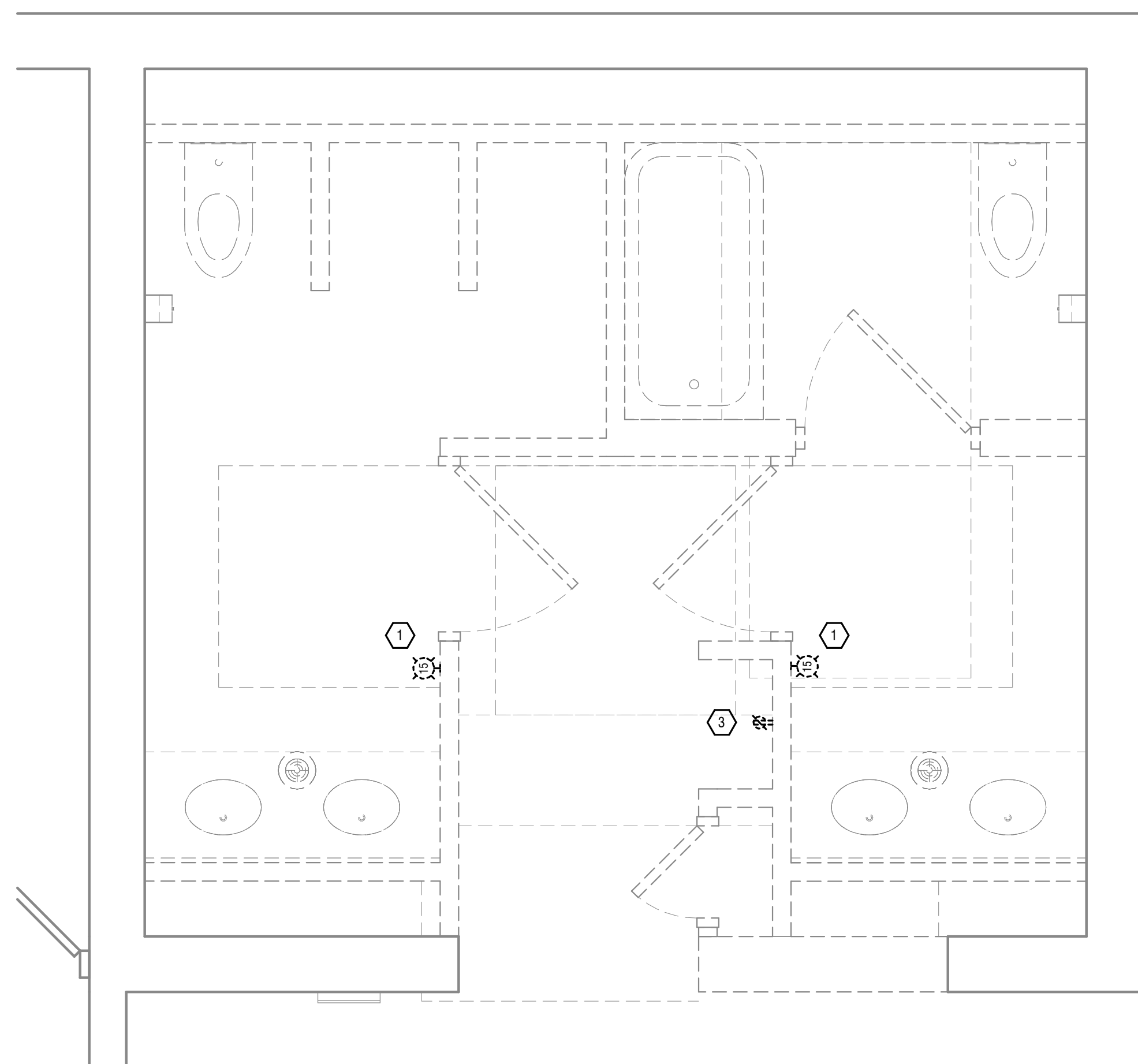
4 ROOMS 7116 & 7117 - LIGHTING INSTALLATION  
E-105 1/2" = 1'-0" 0' 1' 2' 4'



3 ROOMS 7116 & 7117 - ELECTRICAL INSTALLATION  
E-105 1/2" = 1'-0" 0' 1' 2' 4'



2 ROOMS 7116 & 7117 - LIGHTING REMOVAL  
E-105 1/2" = 1'-0" 0' 1' 2' 4'



1 ROOMS 7116 & 7117 - ELECTRICAL REMOVAL  
E-105 1/2" = 1'-0" 0' 1' 2' 4'

